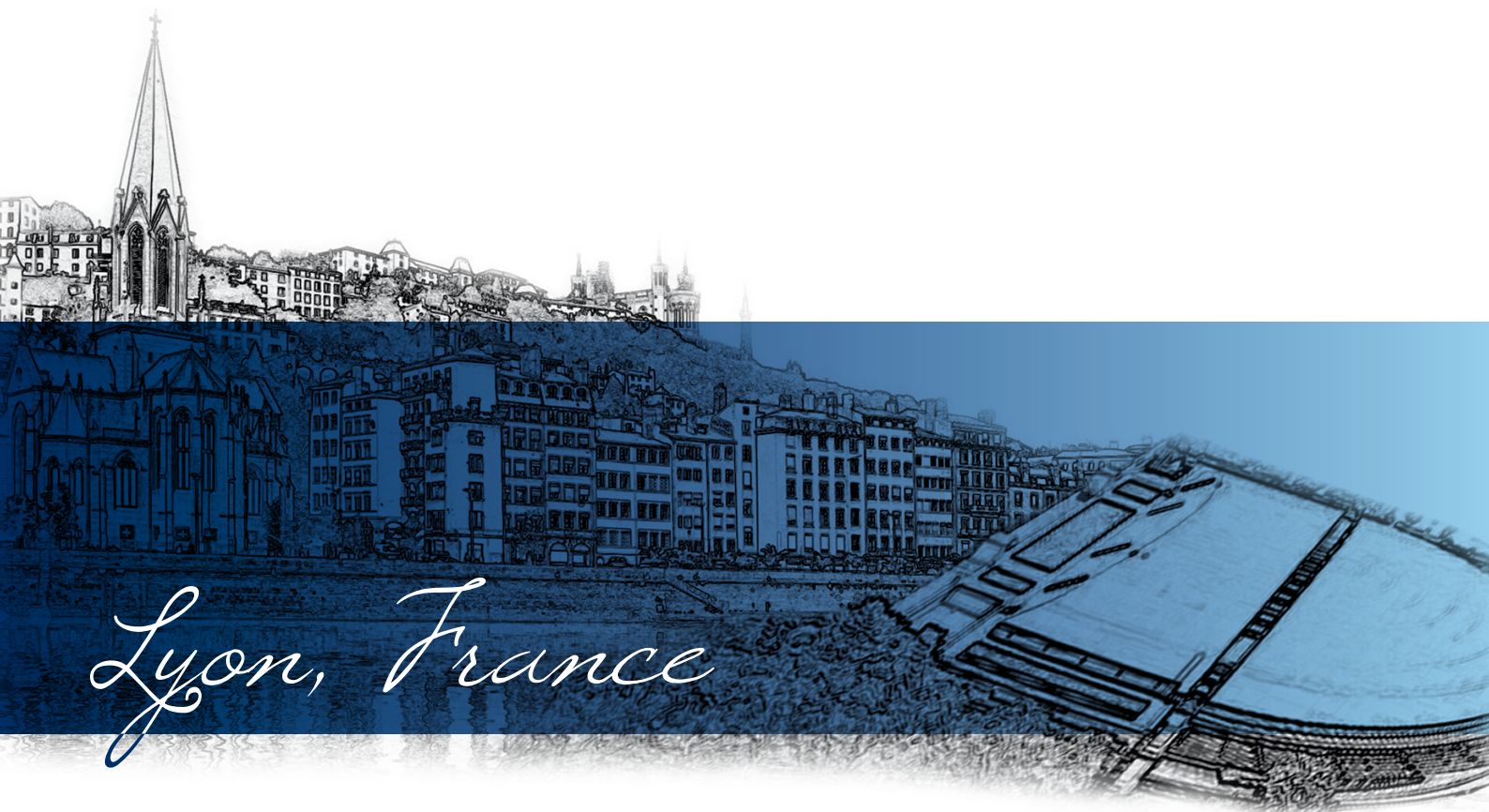
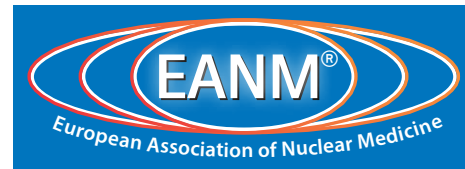


EANM'13



Lyon, France

Annual Congress of the
European Association of Nuclear Medicine

October 19–23, 2013
Lyon, France

www.eanm.org

Preliminary Programme & Call for Abstracts
Registration & Hotel Reservation

start up!



**ESNM Educational Courses –
check out the free teaser of the
PET/CT Oncology (basic) course**

Full educational courses are converted into an electronic learning and self-assessment experience.

Full courses are CME accredited by the UEMS.

**CME Sessions Milan 2012 –
collect CME points and view
high class educational sessions**

Selected CME and plenary sessions, recorded during the EANM annual congress.

CME points are provided for each CME lecture “attended”.

Webinars – education to go

Easy listening, effective learning. Recorded **web seminar** at its best.




ESNM

**vLearning
2013**

Please visit www.eanm.org
for further information

Table of Contents

Letter of Invitation.....	4
Committees.....	5
Scientific Programme Overview.....	6 – 10
Plenary Sessions/Symposia/Debates.....	11
Continuing Medical Education 	12
Pre-Congress Symposia.....	13
EANM Research Ltd (EARL).....	13
Interactive Sessions: Pitfalls & Artefacts & Physiology.....	13
Young EANM Daily Forum.....	13
Technologist Programme.....	14
Key Dates.....	15
Congress Information.....	15
Poster Exhibition.....	16
Industry Exhibition.....	16
Awards.....	16
Call for Abstracts.....	17
EANM Members' Assembly.....	17
General Information (A – Z).....	18
Registration.....	21
Congress Social Programme.....	23
Accompanying Persons' Programme.....	23
Hotel Accommodation.....	24
List of Hotels.....	26
Hotel Map.....	28
Hotel Descriptions.....	30
Official Airline Network.....	38
Useful Addresses.....	39
Imprint.....	40





On behalf of the EANM, the local Organising Committee and the Scientific Committee, it is my great pleasure and honour to invite you to France for the 26th Annual Congress of the EANM, to be held in Lyon in October 2013. This meeting will offer practitioners from across the world an ideal opportunity to pursue continuing medical education, to learn about recent advances, likely future developments and potential research avenues, and to exchange scientific ideas and experiences in our field – all within a unique environment.

Lyon is one of the first “European” cities, dating back to the Gallo-Roman period (Lugdunum was the capital of the Gauls), and present-day Lyon combines history, culture, tradition and modernity. Its geographic location is strategic, less than 2 hours by train from Paris and the French Riviera. The secrets of the old city can be appreciated in the Renaissance district, which is ranked in the UNESCO World Heritage list. Its old stone passages, galleries and spiral staircases constitute an impressive labyrinth, and one can view impressive vestiges of the Gallo-Roman period and famous old silk weaving looms.



Beyond the old town, Lyon is looking keenly to the future. It offers very innovative architecture such as the “place des Terreaux”, built by Daniel Buren, and the Opera House, designed by Jean Nouvel, as well as an “International City”, where the Congress will be held, on the banks of the Rhône and Saône rivers. Lyon is also very attractive on account of its artistic activity, such as opera and ballet, and the shopping opportunities provided by all the French fashion leaders. Furthermore, Lyon is the French capital of gastronomy: it is surrounded by the famous vineyards of Bourgogne and Beaujolais and offers a large choice of convivial dining venues, ranging from the “big chefs” such as Bocuse to traditional cuisine in intimate small bistros called “bouchons”.

Lyon is among the leading European cities for Life Science Research, with three famous universities, two recognised medical schools, large university hospitals and institutes of biomedical and bioengineering research. Nuclear medicine is very active in terms of both number of facilities – there are six PET-CT scanners, a forthcoming PET-MRI scanner and two cyclotrons – and research.

The story of imaging in Lyon dates back a long way, to the production of the first cinematograph by Louis Lumière in 1895. Participants at the Congress should spare a moment to visit the Institut Lumière on Rue Saint Victor in the old Montplaisir district, which contains a museum and an impressive projection and editing centre.

Lyon perfectly reflects the incredible revolution that has taken place in the imaging field since its inception, leading to modern molecular imaging. The EANM Congress is becoming a key international scientific event. It is the foremost meeting in the field of nuclear medicine in the world in terms of attendance, and reflects the diversity of our discipline: oncology, cardiology, neurology, infection, therapy, physics, dosimetry, biology etc. Over the course of a few days, the 2013 EANM Annual Congress will provide an exciting and diverse scientific programme, covering the full spectrum from educational opportunities to cutting-edge presentations of new and original scientific research.

We look forward to welcoming you in Lyon. We are certain that you will greatly enjoy this major scientific event as well as the French culture, cuisine and hospitality.

Dominique Le Guludec
EANM Congress President 2013

Committees

▶ Executive Committee

President:

J.F. Verzijlbergen (The Netherlands)

Members:

A. Chiti (Italy)

S. Frangos (Cyprus)

J. Fettich (Slovenia)

B.J. Krause (Germany)

D. Le Guludec (France)

W.J.G. Oyen (The Netherlands)

▶ Local Organising Committee

Congress President:

D. Le Guludec (Paris, France)

Members:

F. Giammarile (Lyon, France)

C. Houzard (Lyon, France)

T. Mognetti (Lyon, France)

C. Scheiber (Lyon, France)

▶ Technologist Programme Committee

Chair:

G. Testanera (Italy)

Members:

M. Federspiel (Denmark)

P. Fragoso Costa (Germany)

P. Hogg (United Kingdom)

C. Pestean (Romania)

H. Ryder (Ireland)

V. Veloso Jerónimo (Portugal)

B. Vidovic (Slovenia)

▶ Scientific Committee

Chair:

D. Le Guludec (France)

Members:

D. Agostini (France)

L. Bodei (Italy)

E. Bombardieri (Italy)

I. Carrio (Spain)

F. Cicone (Italy)

A. Faivre-Chauvet (France)

G. Flux (United Kingdom)

F. Giammarile (France)

U. Haberkorn (Germany)

C. Halldin (Sweden)

C.A. Hoefnagel (The Netherlands)

R. Kluge (Germany)

B.J. Krause (Germany)

W.J.G. Oyen (The Netherlands)

F. Paycha (France)

P. Payoux (France)

B. Sattler (Germany)

A. Signore (Italy)

G. Testanera (Italy)

Saturday, October 19, 2013

TIME SCHEDULE										
Time										
08:00 – 18:00	Pre-Congress Symposium	Pre-Congress Symposium	Pre-Congress Symposium	EANM Advisory Council Meeting (11:00 - 13:00)	ESNM Meeting (14:00 - 16:00)	EANM Delegates Assembly (14:00 - 16:00)	UEMS/EBNM Delegates Assembly (16:00 - 18:00)	EANM Committee Meetings (16:00 - 18:00)		
19:00 – 20:00	OPENING CEREMONY & WELCOME RECEPTION (20:00 – 22:30)									

TIME SCHEDULE

Time/Halls	Amphithéâtre	Auditorium Lumière	Forum 3	Bellecour 1/2/3	Auditorium Pasteur	Gratte Ciel Lounge	Salon Pasteur	Gratte Ciel 1/2/3	Rhône 3A/3B	Tête D'Or 1/2	Poster Exhibition Bellecour Area
Cap.	3 140	888	700	380	300	280	280	250	220	180	
08:00 – 09:30	101 CME 1: Oncology & Drug Development Drug Development in Oncology	102 Symposium 1	103 Technologists 08:00 - 08:12 Opening Ceremony 08:15 - 09:45 CTE 1: EANM-TC/SNMMI-ITS Joint Session: Technologist Perspective in Radionuclide Metabolic Therapy				107 Pitfalls & Artefacts & Physiology				Poster Walks (08:30 - 09:30)
10:00 – 11:15	201 Plenary Session 1 incl. Marie Curie Lecture: Functional and Molecular Imaging in Heart Disease		203 In Hall Amphithéâtre: Plenary Session 1 incl. Marie Curie Lecture: Functional and Molecular Imaging in Heart Disease	204 Featured 1							
11:30 – 13:00	301 CME 2: Therapy & Dosimetry Peptide Receptor Radio Therapy (PRRT)	302 Symposium 2	303 Technologists CTE 2: Multiprofessional Round Table on Advanced Practice	304 Featured 2	305 Parallel Session	306 Parallel Session	307 Parallel Session	308 Parallel Session	309 Parallel Session	310 Parallel Session	
13:00 – 14:30		Industry Lunch Symposium		Industry Lunch Symposium	Industry Lunch Symposium			Clinical Audit beyond Europe		Young EANM Daily Forum	
14:30 – 16:00	401 CME 3: Physics Motion Correction	402 Symposium 3	Technologists 403a 14:30 - 15:30 Mini Course 1: PET-MRI Studies in Brain ***** 403b 15:45 - 16:45 Mini Course 2: Radionuclide Therapy in Oncology ***** 403c 17:00 - 18:00 Mini Course 3: Dose Reduction	404 Featured 3	405 Parallel Session	406 Parallel Session	407 Parallel Session	408 Parallel Session	409 Parallel Session	410 Parallel Session	
16:30 – 18:00	501 CME 4: Radiopharmacy & Drug Development State-of-the-art Radiopharmaceutical Production	502 Symposium 4		504 Featured 4	505 Parallel Session	506 Parallel Session	507 Parallel Session	508 Parallel Session	509 Parallel Session	510 Parallel Session	

Monday, October 21, 2013

TIME SCHEDULE											
Time/Halls	Amphithéâtre	Auditorium Lumière	Forum 3	Bellecour 1/2/3	Auditorium Pasteur	Gratte Ciel Lounge	Salon Pasteur	Gratte Ciel 1/2/3	Rhône 3A/3B	Tête D'Or 1/2	Poster Exhibition Bellecour Area
Cap.	3140	888	700	380	300	280	280	250	220	180	
08:00 – 09:30	601 CME 5: Cardiovascular Myocardial Viability	602 Symposium 5	603 Technologists Oral Presentations 1				607 Pitfalls & Artefacts & Physiology				Poster Walks (08:30 – 09:30)
10:00 – 11:15	701 Plenary Session 2: Use of PET in Assessment of Therapy		703 In Hall Amphithéâtre: Plenary Session 2: Use of PET in Assessment of Therapy	704 Featured 5							
11:30 – 13:00	801 CME 6: Bone & Joint The Limping Patient: Multimodality Imaging Approach	802 Symposium 6	803 Technologists Oral Presentations 2	804 Featured 6	805 Parallel Session	806 Parallel Session	807 Parallel Session	808 Parallel Session	809 Parallel Session	810 Parallel Session	
13:00 – 14:30		Industry Lunch Symposium	Technologist Interest Meeting	Industry Lunch Symposium	Industry Lunch Symposium					Young EANM Daily Forum	
14:30 – 16:00	901 CME 7: Paediatrics Thyroid Diseases	902 Symposium 7	903 Technologists CTE 3: Challenges and Perspective in Health Care: Nuclear Medicine Role	904 Featured 7	905 Parallel Session	906 Parallel Session	907 Parallel Session	908 Parallel Session	909 Parallel Session	910 Parallel Session	
16:30 – 18:00	1001 CME 8: Inflammation & Infection The Diabetic Patient	1002 Symposium 8	1003 Technologists CTE 4: Reconstructions: TrueX + TOF, PSF, OSEM	1004 Featured 8	1005 Parallel Session	1006 Parallel Session	1007 Parallel Session	1008 Parallel Session	1009 Parallel Session	1010 Parallel Session	

Tuesday, October 22, 2013

TIME SCHEDULE

Time/Halls	Cap.	Amphithéâtre	Auditorium Lumière	Forum 3	Bellecour 1/2/3	Auditorium Pasteur	Gratte Ciel Lounge	Salon Pasteur	Gratte Ciel 1/2/3	Rhône 3A/3B	Tête D'Or 1/2	Poster Exhibition Bellecour Area
08:00 – 09:30	3140	1101 CME 9: Interactive - Neuroimaging Brain PET	888	In Poster Exhibition Area: 1103 Technologists Poster Session 1,2,3,4	380	300	280	1107 Pitfalls & Artefacts & Physiology	250	220	180	Technologists Poster Session 1,2,3,4 (08:00 - 09:30) Poster Walks (08:30 - 09:30)
10:00 – 11:15		1201 Plenary Session 3: New Insights in Molecular Neuroimaging		1203 In Hall Amphithéâtre: Plenary Session 3: New Insights in Molecular Neuroimaging								
11:30 – 13:00		1301 CME 10: Interactive - ESNM Faculty PET/CT in Cancer of Unknown Primary & Paraneoplastic Syndromes	1302 Symposium 10	1303 Technologists Oral Presentations 3	1304 Featured 10	1305 Parallel Session	1306 Parallel Session	1307 Parallel Session	1308 Parallel Session	1309 Parallel Session	1310 Parallel Session	
13:00 – 14:30			Industry Lunch Symposium	Technologist Lunch Meeting: Preparing for a Congress: How to Present your Scientific Work	Industry Lunch Symposium	Industry Lunch Symposium				EANM MEMBERS' ASSEMBLY	Young EANM Daily Forum	
14:30 – 16:00		1401 CME 11: Interactive - ESNM Faculty Unusual Pitfalls in Nuclear Medicine	1402 Symposium 11	1403 Technologists CTE 5: EANM-TC/ESTRO-RTT Joint Session: Evolution in RT Planning	1404 Featured 11	1405 Parallel Session	1406 Parallel Session	1407 Symposium 12	1408 Parallel Session	1409 Parallel Session	1410 Parallel Session	
16:30 – 18:00			1502 Symposium 13		1505 Featured 12	1505 Parallel Session	1506 Parallel Session	1507 Parallel Session	1508 Parallel Session	1509 Parallel Session	1510 Parallel Session	

Wednesday, October 23, 2013

TIME SCHEDULE											
Time/Halls	Amphithéâtre	Auditorium Lumière	Forum 3	Bellecour 1/2/3	Auditorium Pasteur	Gratte Ciel Lounge	Salon Pasteur	Gratte Ciel 1/2/3	Rhône 3A/3B	Tête D'Or 1/2	Poster Exhibition Bellecour Area
Cap.	3140	888	700	380	300	280	280	250	220	180	
08:00 – 09:30	1601 CME 12: Oncology Cross-sectional Imaging In Nuclear Medicine	1602 Symposium 14	1603 Technologists 09:30 - 10:45 CIE 6: Focus on Children - Updates in Paediatric Nuclear Medicine	1604 Featured 13	1605 Parallel Session	1606 Parallel Session	1607 Pitfalls & Artefacts & Physiology	1608 Parallel Session	1609 Parallel Session	1610 Parallel Session	
10:00 – 11:30	1701 CME 13: Translational Molecular Imaging Optical and Nuclear Imaging	1702 Symposium 15		1704 Featured 14	1705 Parallel Session	1706 Parallel Session	1707 Parallel Session	1708 Parallel Session	1709 Parallel Session	1710 Parallel Session	
11:45 – 13:15	1801 11:45 - 12:00: Awards Ceremony 12:00 - 13:00: Highlights Lecture 13:00 - 13:15: Closing Ceremony		1803 In Hall Amphithéâtre: 11:45 - 12:00: Awards Ceremony 12:00 - 13:00: Highlights Lecture 13:00 - 13:15: Closing Ceremony								

Pre-Congress Meetings
Special Features
Industry Lunch Symposia
Continuing Medical Education Sessions
Symposia
UEMS/EBNM/CANMD Session
Poster Sessions
Parallel Sessions
Featured Parallel Sessions
Plenaries/Awards/Highlights
Technologist Programme

Plenary Sessions

▶ Sunday, October 20, 2013 – Plenary 1

Functional and Molecular Imaging in Heart Disease (incl. Marie Curie Lecture)

- Myocardial Perfusion and Blood Flow in Clinical Decision Making (*M. Di Carli, US*)
- **Marie Curie Lecture:** Imaging of Coronary Artery Disease: Stenosis versus Perfusion (*J.J. Bax, NL*)
- Molecular Imaging from Bench to Bedside (*M. Schwaiger, DE*)

▶ Monday, October 21, 2013 – Plenary 2

Use of PET in Assessment of Therapy

a) Methods

- FDG Standardisation (*F.M. Mottaghy, DE*)
- What Tracer beyond FDG (*C. Nanni, IT*)

b) Therapy Evaluation

- Usefulness of Tailored Treatment in Various Cancer Patients (*B. You, FR*)
- Radionuclide Therapy (*F. Kraeber-Bodéré, FR*)

▶ Tuesday, October 22, 2013 – Plenary 3

New Insights in Molecular Neuroimaging

- Is FDG still the Gold Standard for Early and Differential Diagnosis of AD?
Comparison to Amyloid and other Biomarkers (*K. Herholz, UK*)
- The Use of PET Imaging in Tracking Neurodegenerative Diseases Progression (*K.L. Leenders, NL*)
- Role of Molecular Imaging in the Treatment and Follow-up of Brain Tumours (*C. la Fougère, DE*)

▶ Wednesday, October 23, 2013 – Plenary 4

Highlights Lecture

F.M. Bengel (DE)
S. Fanti (IT)

Symposia/Debates

The preliminary list of topics is as follows:

- EANM/EAU Joint Session: Diagnostics and Therapy of Bone Metastases in Patients with Advanced Prostate Cancer
- EANM/EORTC Joint Session: Imaging Biomarkers for Early Response Assessment in Clinical Oncology Trials
- EANM/ESMO Joint Session: Bringing Molecular Imaging into Clinical Practice in Medical Oncology
- EANM/ESTRO Joint Session: PET/MR and Radiation Oncology
- EANM/SNMMI Joint Session: Neurology
- EANM/MDS Joint Session: Biomarkers for Dementia with Lewy-bodies
- EANM/ELI Joint Session: PET in Lymphoma: The New Proposals for Staging and Response Assessment
- EANM/BIR Joint Session: Current Evidence and Future Directions of SPECT/CT Imaging
- From Cell to Scanner 2013: Hypoxia
- Advances in Cardiac SPECT and SPECT-CT
- Assessment of Patient with Suspected CAD
- Combination Therapies
- Multimodality Tracers
- The Nuclear Medicine Diagnosis of Bone and Cardiovascular Infections
- FDG-PET in Early Alzheimer: Why do they look so Heterogeneous?

Titles are subject to change. Please visit eanm13.eanm.org for updated information.

Continuing Medical Education



Continuing Medical Education will span all 4 days of the EANM Congress 2013. As in the past years, EANM will seek accreditation from the European Accreditation Council for Continuing Medical Education (EACCME). A request for accreditation has already been filed – number of points pending. By virtue of a reciprocal agreement between EACCME and the American Medical Association (AMA), the credits granted by EACCME are recognized as Physician's Recognition Award by the AMA.

In order to provide the EANM CME programme with a thematic focus and clinical input while maintaining a broad spectrum of education, there will be three categories of CME sessions: the white-column sessions feature a broad spectrum of topics over a period of 3 – 4 years. The orange-column sessions have a clinical/oncological focus, which will be complemented by the interactive sessions in the blue column.

Time	Sunday, October 20	Monday, October 21	Tuesday, October 22	Wednesday, October 23
08:00 – 09:30	CME 1 Oncology & Drug Development Drug Development in Oncology	CME 5 Cardiovascular Myocardial Viability	CME 9 Interactive – Neuroimaging Brain PET	CME 12 Oncology Cross-sectional Imaging in Nuclear Medicine
11:30 – 13:00	CME 2 Therapy & Dosimetry Peptide Receptor Radio Therapy (PRRT)	CME 6 Bone & Joint The Limping Patient: Multimodality Imaging Approach	CME 10 Interactive – ESNM Faculty PET/CT in Cancer of Unknown Primary & Paraneoplastic Syndromes	10:00 – 11:30 CME 13 Translational Molecular Imaging Optical and Nuclear Imaging
14:30 – 16:00	CME 3 Physics Motion Correction	CME 7 Paediatrics Thyroid Diseases	CME 11 Interactive – ESNM Faculty Unusual Pitfalls in Nuclear Medicine	
16:30 – 18:00	CME 4 Radiopharmacy & Drug Development State-of-the-art Radiopharmaceutical Production	CME 8 Inflammation & Infection The Diabetic Patient		

The above list shows the intended CME programme as per date of printing and is subject to change.

Special Features

▶ Pre-Congress Symposia

EANM'13 will again offer various pre-congress symposia. Topics and speakers are currently being finalised.

For further details please visit eanm13.eanm.org.

▶ EANM Research Ltd (EARL)

Take the opportunity and meet the EANM Research Ltd (EARL) at EANM'13

EARL is a 100% subsidiary of the EANM, founded in 2006 as an initiative for Multicentre Nuclear Medicine & Research. EARL's activities are:

- EARL FDG-PET/CT Accreditation: providing a minimum standard of PET/CT scanner performance in order to harmonise the acquisition and interpretation of PET and PET/CT scans, which is essential in multicentre trials. As of December 2012, 55 PET/CT sites in 12 countries are participating in the accreditation programme.
- EARL Taskforce EU grants: competing for EU research grants, positioning nuclear medicine within the EU research agenda
- Facilitation of multicentre research projects

During EANM'13 in Lyon:

- You can meet EARL at the EARL booth in the industry exhibition
- There will be a session including the following topics:
 - EARL at a Glance: History, Projects and Visions (*K. Tatsch*)
 - EARL FDG-PET/CT Accreditation Programme: Feasibility, Overview and Results (*R. Boellaard*)
 - EARL Strategy EU Grant Applications (*M. Gotthardt*)

We invite all participants to get acquainted with the activities of EARL.

▶ Interactive Sessions: Pitfalls & Artefacts & Physiology

Each morning renowned specialists will present interesting cases and will guide you interactively from patients' history through diagnosis to treatment options.

For further details please visit eanm13.eanm.org.

▶ Young EANM Daily Forum

The association puts emphasis on a continuously growing "Young EANM" community. One of the main goals of EANM is to foster young professionals and to continue with the features which were successful during the past congresses.

A Young EANM Daily Forum will be offered again at EANM'13 in Lyon to share gathered experiences, mentored by senior faculty members.

The Daily Forum sessions are lunch-time sessions focussed on EANM members who are at the beginning of their career.

The sessions will be dedicated to different topics especially interesting for young professionals.

These Daily Forums are open to everybody who is interested in the Young EANM initiatives – including senior experts who would like to observe the discussions and meet the young talent in Nuclear Medicine. Furthermore, it is a great opportunity for junior EANM members to get to know each other and EANM, and exchange information and experiences.

We are looking forward to welcoming all EANM members attending EANM'13 Lyon.

For updated information please visit eanm13.eanm.org.

Invitation from the EANM Technologist Committee

Online abstract submission only
Deadline: April 8, 2013

Dear Friends and Colleagues,

We would like to invite you to attend the EANM Congress 2013 in Lyon, France.

Health Care in general and Nuclear Medicine particularly face a period of challenge and opportunity and this will be of central concern and interest to Technologists. Education, instrumentation development, standardisation of clinical techniques and advancing competencies will be key issues for technologist success in the near future and aspects of these topics will be addressed within our conference.

The EANM annual congress offers educational sessions with a strong emphasis on enhancing the professional skills required for Technologists to work in an efficient, competent and proactive fashion. As usual, in association with the main scientific programme, a high standard Technologist programme will be offered, including 3 mini courses, 6 Continuing Technologist Education (CTE) sessions, 1 lunch meeting and 3 oral presentation sessions. Poster sessions will also be organised.

▶ Continuing Technologist Education Sessions 2013:

CTE1: Technologist Perspective in Radionuclide Metabolic Therapy
(Tech Guide Launch – EANM-TC/SNMMI-TS Joint Session)

CTE 2: Multiprofessional Round Table on Advanced Practice

CTE 3: Challenges and Perspective in Health Care: Nuclear Medicine Role

CTE 4: Reconstructions: TrueX + TOF, PSF, OSEM

CTE 5: Evolution in RT Planning (EANM-TC/ESTRO-RTT Joint Session)

CTE 6: Focus on Children – Updates in Paediatric Nuclear Medicine

Mini Course 1: PET-MRI Studies in Brain

Mini Course 2: Radionuclide Therapy in Oncology (Tech Guide Launch)

Mini Course 3: Dose Reduction

Lunch Meeting: Preparing for a Congress: How to Present your Scientific Work

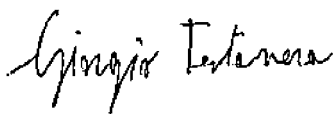
Technologist Interest Meeting: Technologist Committee 20th Anniversary Celebration

Technologist prizes for outstanding research will be awarded during the Congress Closing Ceremony. The annual EANM Technologist Committee Interest meeting will be held, inviting members and representatives of national Technologist organisations from European countries. This meeting is open to any Technologist willing to meet the members of the EANM Technologist Committee (TC), and this year there will be a focus on the 20th anniversary celebration of the Committee with discussions on past achievements and future plans.

We would like to encourage you to submit an online abstract for an oral and/or poster presentation. The deadline for abstract submission is April 8, 2013.

We look forward to welcoming you to the EANM Congress 2013 in Lyon.

Sincerely,



Giorgio Testanera

Chair, EANM Technologist Committee

Key Dates

- April 8, 2013: Deadline for submission of abstracts
- May 29, 2013: Notification of acceptance of abstracts
- June 10, 2013: Deadline early registration
- October 14, 2013: Deadline advanced registration
(after this date on-site registration only)
- October 19, 2013: Opening ceremony and welcome reception
- October 23, 2013: Closing ceremony and farewell cocktail

Congress Information

▶ Congress Venue

CCC - Cité | Centre de Congrès | Lyon
50 Quai Charles de Gaulle
69463 Lyon Cedex 06, France
URL: www.ccc-lyon.com

The CCC - Cité | Centre de Congrès | Lyon is approx. 20 minutes by bus from the city centre of Lyon. The closest bus station is Cité International (Bus C1, 4 and 5). Designed in 1996 and extended in 2006, the CCC Lyon now has an event space of approx. 25.000 sqm. It is located between the River Rhône and Parc de la Tête d'Or, a big park area including a lake – ideal for a relaxing walk.

▶ Congress Language

The congress language is English. No simultaneous translation will be provided.

▶ Abstract Submission, Registration, Accommodation

All registration procedures for the EANM'13 congress will be conducted online.

If you do not have access to the internet please contact the EANM Executive Secretariat indicated below. They will gladly forward the necessary registration forms to you.

▶ EANM Executive Secretariat

Hollandstrasse 14/Mezzanine
1020 Vienna, Austria
Phone: +43-(0)1-212 80 30
Fax: +43-(0)1-212 80 30-9
Email: info@eanm.org
URL: www.eanm.org

PLEASE NOTE! THE PRELIMINARY PROGRAMME IS THE ONLY PRINTED MATTER FOR THE EANM CONGRESS 2013 IN LYON! FOR ANY FURTHER INFORMATION CONCERNING ABSTRACT SUBMISSION, REGISTRATION AND THE UPDATED SCIENTIFIC PROGRAMME PLEASE REFER TO OUR WEBSITE:

eanm13.eanm.org

Poster Exhibition

▶ Opening Hours:

Sunday, October 20, 2013: 09:00 – 17:00
Monday, October 21, 2013: 09:00 – 17:00
Tuesday, October 22, 2013: 09:00 – 17:00
Wednesday, October 23, 2013: 09:00 – 12:00

Setup:
Saturday, October 19, 2013
08:00 – 18:00

The Poster Exhibition will be located on level -1, one level above the Industry Exhibition. Posters should be mounted by Saturday 18:00 at the latest. Dismantling of posters does not start before Wednesday 12:00. All posters that have not been dismantled by Wednesday 14:00 will be destroyed at the end of the congress.

The norm size of posters is 90cm wide and max. 140cm high. On-site staff will be available to assist you with preparatory work. They will show you to your poster number and lend you a hand with mounting the posters.

For further information please visit eanm13.eanm.org.

Industry Exhibition

▶ Opening Hours:


Sunday, October 20, 2013: 09:00 – 17:00
Monday, October 21, 2013: 09:00 – 17:00
Tuesday, October 22, 2013: 09:00 – 17:00

Setup:
Wednesday, October 16 –
Saturday, October 19, 2013

The Industry Exhibition will be located in level -2, one level below the Poster Exhibition and two levels below the registration area. It will give you a wide and almost complete overview of the latest achievements concerning pharmaceuticals and radiopharmaceuticals, as well as state-of-the-art technical equipment. Booksellers and publishers will display the most recent publications in the field of Nuclear Medicine and related sciences.

Awards

During the closing ceremony of the EANM'13 congress the following prizes/awards and certificates will be awarded:

- EANM Marie Curie Award 2013
- EANM  **Eckert & Ziegler** Abstract Award
 - European Journal of Nuclear Medicine and Molecular Imaging (EJNMMI) Prizes:
 - Best Clinical Paper
 - Best Scientific Paper
 - Most Cited Paper
- Technologist Awards
 - 3 Best Oral Presentations
 - 3 Best Poster Presentations
 - Nuclear Medicine Technologist Exam Prizes for the 2 Technologists who pass the CTE exam with the best marks

Further information and guidelines for these prizes/awards: www.eanm.org

Call for Abstracts

For abstract submission and all related information please follow the guidelines provided on the congress website eanm13.eanm.org. Abstracts should not exceed 400 words (excluding title and authors) and should be well structured stating the *aim, materials and methods, results and conclusion* of your chosen topic. Abstracts should be written in Microsoft Word and may not include tables, graphics or pictures. You can edit, delete or simply reload your abstract(s) as often as you like on the internet. After expiry of the deadline abstracts can only be withdrawn in writing. Guidelines for oral as well as poster presentations will be available on eanm13.eanm.org at the beginning of May 2013. Authors will be notified about the acceptance of abstracts by email on May 29, 2013.

Online abstract submission only
Deadline: April 8, 2013

EANM Members' Assembly

The Members' Assembly will be held on Tuesday, October 22, 2013 from 13:00 – 14:30.

Please note: Only members in good standing* of the European Association of Nuclear Medicine are eligible to attend the Members' Assembly.

(*Members in good standing are members who have paid their membership dues for the year 2013)

Tuesday, October 22, 2013
13:00 – 14:30

General Information (A – Z)

▶ **Airport and Arrival Information**

The international airport Saint-Exupéry is located 25 km east of Lyon.

The Rhônexpress (streetcar) connects the airport with the city centre (Part-Dieu Station) in less than 30 minutes. It departs daily every 15 minutes between 06:00 and 21:00 and every 30 minutes between 05:00 and 06:00 and from 21:00 to 00:40 (midnight from Part-Dieu). The single ticket costs 13,00 Euro and the return ticket 23,00 Euro. You can either buy the tickets online (<http://www.rhonexpress.fr/>), at the automatic ticket vending machines at the stations (credit card accepted) or from the steward in the tram directly (1,00 Euro surcharge).

The SATOBUS shuttles connect the airport with several stops in the city of Lyon. The buses depart every 20 minutes between 05:00 and 11:20. Further information is available under <http://satobus-alpes.altibus.com>.

Taxi: The taxi fare for a ride into the city centre is approx. 100,00 Euro one-way.

For further information on the public transportation system in Lyon, please visit <http://www.tcl.fr/en>.

▶ **Banks, Credit Cards and ATMs**

Banks are usually open from 08.30 – 16:30 (Monday–Friday) and closed during the weekends. Credit cards are accepted at many locations; however, you will find that small shops, kiosks, restaurants or coffee houses do not accept credit cards. In any case, ATM machines are plentiful and easy to use. Travel cheques can be cashed in most banks and exchange offices.

▶ **Certificate of Attendance**

Upon arrival at the congress venue all registered delegates will receive a certificate of attendance together with their congress bag.

▶ **Churches, Synagogues, Mosques**

The French church is approximately 90% Roman Catholic, however, churches of many other denominations are also to be found in Lyon. Services are generally held on Sundays. Please contact your hotel concierge for current times of services.

▶ **City of Lyon**

Founded by the Romans, with many preserved historical areas, Lyon is the archetype of the heritage city, as recognised by UNESCO. Lyon is a vibrant metropolis which is starting to make the most out of its unique architectural, cultural and gastronomic heritage, its dynamic demographics and economy and its strategic location between Northern and Southern Europe. It is becoming more and more open to the world, with an increasing number of students and international events. The city itself has approx. 480,000 inhabitants.

By the 16th century, thanks to its legendary silk trade, Lyon was the richest city in France. Lyon's central showcase district is the Vieux Lyon and is considered one of the most charming and extensive „Old Towns“ in Europe. Its cobble paved, winding streets, situated below the great Cathedral, are punctuated by cafes, interesting shops and numerous gourmet restaurants.

Lyon has a very active cultural life with a wide range of museums, art galleries, theatres, an opera house, music venues and more. It also has a thriving population of second-hand and antiquarian book dealers, many of whom are to be found in the historic district of Old Lyon or in the streets around the rue Auguste Comte with its many antique shops.

▶ **Climate**

Lyon has a “semi-continental” climate. In October the average daytime high temperature can be expected to be around 16°C (61°F). Visitors will find that they will need to pack warmer clothing for their visit, especially in the evenings when the temperature can drop as low as 7°C (45°F). Despite the relatively mild weather and a pleasant climate during the autumn months, this is the time of the year when rainfall is at its highest levels, so an umbrella and wet weather gear are essential.

▶ **Congress Office and Registration Desk**

The congress office and registration desk at the congress venue will be open during the following days and times:

Saturday, October 19, 2013:	07:30 – 19:00
Sunday, October 20, 2013:	07:30 – 18:00
Monday, October 21, 2013:	07:30 – 18:00
Tuesday, October 22, 2013:	07:30 – 18:00
Wednesday, October 23, 2013:	07:30 – 12:00

▶ **Currency**

The official currency in France is the Euro (€). You can exchange your currency without any limits for a total amount at all banks and exchange offices in Lyon. When you are exchanging your currency, you will need your passport or official ID card. If you do not have it with you, the bank may refuse to exchange your currency.

▶ **Electricity**

The power supply in France is 220/240V. Most electrical outlets adhere to the continental standard (Schuko). Appliances from North America require a transformer and British ones an adaptor for the two-pin sockets in use in France.

▶ **Museums**

In Lyon you will find museums and exhibitions of every kind. Besides the great museums such as the Gallo-Romain, or the Fine Arts Museum, there are the museums of modern art as well as museums of Telecommunications, History of the Printing, Museum of the Textiles and Decorative Arts, Institute Lumière, Palace of Miniature Art and more.

For prices and opening hours please refer to the hotel reception or any tourist information.

▶ **Public Bicycle Sharing System**

Vélo’v is an innovative new bike service that is simple and practical for short journeys. You can hire a bicycle at any Vélo’v station, 24 hours a day, 7 days a week. To access the service, you have to sign up for a subscription. The following services are available (one day or one week):

- 1-day ticket: 1,50 Euro (access to velo’v during 24 hours)
- 7-day ticket: 5,00 Euro (access to velo’v during 7 consecutive days)

▶ **Public Transportation Ticket**

All congress participants will receive a complimentary public transportation ticket together with their congress bag. Please note that this ticket is not valid for the airport transfer!

For your information: the CCC Lyon (Congress Centre) is connected to the city centre via three bus lines: C1 and C4 (direction Cité Internationale) and C5 (direction Rillieux Semailles). Please get off at the stop “Cité Internationale – Centre de Congrès”.

▶ Restaurants and Nightlife

Lyon boasts a large number of restaurants, some of them among the finest in France. Restaurants and Cafés are normally open for lunch from 12:00 to 15:00 and for dinner from 17:30 to 22:00. The 4 brasseries from the famous Chef Paul Bocuse are worth a try. The best way to see the city's architectural heritage is by night, when over 100 sites are illuminated. Old Lyon, the banks of the Saône, the Peninsula and Croix Rousse are the liveliest districts at night. There is a wide variety of bars and pubs scattered all over the city.

▶ Shopping

Lyon is a shopper's paradise. The area of the peninsula boasts the most attractive streets for shopping, such as rue Victor Hugo and rue de la République. Key areas: Rue du Président Herriot, with its elegant 19th-century buildings, makes an ideal setting for luxury boutiques. Fine antiques and old books can be found on rue Auguste Comte or at La Cité des Antiquaires. Lyon also boasts one of the finest chocolate factories in the world.

Les Puces du Canal is Lyon's historical flea market (Sunday morning), located on the outskirts of Lyon at 1 rue du Canal in Villeurbanne. To understand why Lyon is a gourmet's paradise, visit one of its food markets on quai St-Antoine or boulevard de la Croix-Rousse (Tuesday–Sunday mornings). The area around the peninsula is where the big department stores like Printemps are located. For casual shopping, Lyon's Part-Dieu shopping centre, 17 rue du Docteur Bouchut, is ideal and is one of Europe's largest, with over 230 stores, including the famous Galeries Lafayette. Most shops are usually open from Monday to Saturday between 09:30 and 19:00 (some close between 12:00 and 14:00) but are closed on Sundays. Some small grocery stores are open on Sunday mornings.

▶ Taxes & Tipping

In France VAT (Taxe sur la valeur ajoutée – TVA) is a consumption tax paid on certain goods and services purchased in France and is included in the sale price of these goods and services. There are different rates of VAT in France: standard VAT (19.6%), VAT e.g. for books, restaurants, transport, press publications (7%), VAT e.g. for food, water and non-alcoholic beverages (5.5 %).

Cafés and restaurants in France directly include a 15% service charge in your check. This is required by French law as tips are assessed for taxation purposes.

▶ Taxis

Taxis are quite pricey. The fares are fixed by the authorities: 2,00 Euro when you board, then per km: 1,34 Euro (daytime, 07:00 – 19:00) or 2,02 Euro (nighttimes, Sundays, holidays). The driver may charge a minimum of 6,00 Euro for any trip. There are also a number of possible extra charges: 1,41 Euro for the 4th passenger, 0,91 Euro per animal or large piece of luggage, 1,41 Euro for a pick-up at a train station or airport. Taxis cannot be hailed on the street; you need to go to a taxi station or to call for one. The major taxi companies are:

Lyon Taxi Prestige (+33 687 974 790), Allo Taxi (+33 4 78 28 23 23), Taxi-Radio (+33 4 72 10 86 86), Cabtaxi (+33 4 78 750 750).

▶ Time Zone

Lyon is 6 hours ahead of US – Eastern Standard Time (EST) and 1 hour ahead of Greenwich Mean Time (GMT).

▶ Visas

All visitors entering France must possess valid passports. For citizens from the European Union Member countries a valid identity card is sufficient.

PLEASE CHECK THE CURRENT VISA REQUIREMENTS WITH YOUR LOCAL FRENCH CONSULATE/ EMBASSY BEFORE YOUR DEPARTURE TO LYON!

Registration

ONLINE REGISTRATION ONLY

To register for EANM 2013 please use our online registration system:
eanm13.eanm.org

If you do not have access to the internet, please contact:

EANM Executive Secretariat
 Hollandstrasse 14/Mezzanine
 1020 Vienna, Austria
 Phone: +43-(0)1-212 80 30
 Fax: +43-(0)1-212 80 30-9

Registration Fees in € (19,6% VAT included)	Reduced registration until June 10, 2013	Advanced registration until October 14, 2013	On-site registration after October 14, 2013
EANM Member ³⁾	250,-	390,-	460,-
Non-Member	500,-	655,-	725,-
EANM Junior Member ³⁾	110,-	210,-	280,-
Junior Non-Member ¹⁾	220,-	310,-	380,-
EANM Nurse/Technologist Member ³⁾	80,-	160,-	230,-
Nurse/Technologist Non-Member ²⁾	200,-	255,-	325,-
EANM Associate Member ³⁾	250,-	390,-	460,-
Associate Non-Member	500,-	655,-	725,-
Student ⁴⁾	95,-	95,-	95,-
Accompanying Person	95,-	95,-	95,-

- 1) Physician or other scientist in training. Confirmation letter incl. signature of Head of Department is indispensable for proof of status (please fax or email to dm&c at the time of your registration to: +43 1 409563122 / eanm13@dm-and-c.com).
 - 2) Nurse, healthcare technologist or laboratory technologist (bachelor degree at most). Confirmation letter incl. signature of Head of Department is indispensable for proof of status (please fax or email to dm&c at the time of your registration to: +43 1 409563122 / eanm13@dm-and-c.com).
 - 3) Only members who have paid the full amount of their membership fee for the year 2013 by May 31, 2013 will benefit from the reduced "EANM Member" registration fee.
 - 4) Student without degree. Copy of student ID is indispensable for proof of status (please fax or email to dm&c at the time of your registration to: +43 1 409563122 / eanm13@dm-and-c.com).
- ➔ New members who apply and pay for EANM membership until May 31, 2013 will also benefit from the reduced "EANM Member" registration fee (please visit www.eanm.org/Membership/Application).

▶ Delegate Registration Fees include:

- Access to all scientific sessions (excl. pre-symposia > extra fee)
- Access to poster exhibition
- Access to industry exhibition
- Congress bag
- Free copy of all congress documentation
- Certificate of attendance
- Free copy of congress abstract book
- Invitation to the opening ceremony and welcome reception – Saturday, October 19, 2013
- Invitation to the closing ceremony and farewell cocktail – Wednesday, October 23, 2013

▶ Accompanying Person Registration Fee includes:

- Invitation to the opening ceremony and welcome reception – Saturday, October 19, 2013
- Invitation to the closing ceremony and farewell cocktail – Wednesday, October 23, 2012

▶ Congress Bag

All registered delegates (excl. accompanying persons and exhibitors) are entitled to receive a congress bag. Please pick up your congress bag at the bag distribution area by presenting your congress name badge.

▶ Payment

If the full amount of your **reduced registration fee** has not been received by **June 24, 2013**, the advanced registration fee will automatically become effective.

If the full amount of your **advanced registration fee** has not been received by **October 17, 2013**, the on-site registration fee will automatically become effective.

Registration fees are to be paid in € (Euro)

■ either via bank transfer to:

Volksbank für den Bezirk Weiz
Florianiplatz 1
8200 Gleisdorf, Austria
Account name: EANM 13
Account number: 305 1034 0002
BIC code/Swift address: VBOEATWWWEI
IBAN: AT664232030510340002

(Please do not forget to indicate your name and ID number on the transfer order!
A confirmation email will be forwarded to you as soon as we have received full payment.)

■ or via credit card online:

Visa, Mastercard, Diners Club, American Express are accepted.
A confirmation email will be forwarded to you as soon as you have completed your registration.

▶ Bank Transfer Charges

All bank charges for the transfer service must be paid by the participant.

▶ **Late Payment**

Fees that have been forwarded too late may not have been credited to the congress account when the meeting starts. To avoid double payment, please make sure to bring a copy of your receipt/bank statement.

Please note: Down-payments cannot be accepted.

▶ **Lost / Forgotten Name Badges**

A deposit charge for reprints will be requested for lost or forgotten name badges and will be refunded upon subsequent presentation of both badges (original and reprint).

▶ **Terms of Cancellation**

All cancellations must be notified in writing to dm&c. In the event of cancellation before June 10, 2013 we will refund your registration fee minus a 50% charge for administrative proceedings. Please do not expect this kind of financial settlement until after the congress. After June 10, 2013 we cannot grant any refund for cancellations.

▶ **Congress Social Programme**

All delegates and registered accompanying persons are cordially invited to:

■ **OPENING CEREMONY AND WELCOME RECEPTION**

Saturday, October 19, 2013 | 19:00 – 22:30
CCC Lyon (Cité Centre de Congrès Lyon)

■ **CLOSING CEREMONY AND FAREWELL COCKTAIL**

Wednesday, October 23, 2013 | 13:00 – 14:30
CCC Lyon (Cité Centre de Congrès Lyon)

Please note that only delegates wearing a valid congress name badge will be granted access.

Accompanying Persons' Programme

To meet your personal expectations and needs, please contact us for any tourist information (e.g. sightseeing tours, event calendar) and assistance via email:

eanm13@dm-and-c.com

A dedicated Tours Information Desk will also be available at the EANM 2013 congress venue.

Hotel Accommodation

Rooms of various categories have been reserved in centrally located hotels with easy access to the public transportation system. Rooms will be assigned on a first come, first served basis. Early booking is highly recommended.

All room rates are in Euro (€), per room and night including breakfast, service charge, city tax and VAT.

All quoted rates of this congress room allotment are offered with the following "Best Price Policy": If you should find any lower rates which are comparable in terms & conditions with the official EANM rates and offered directly by the hotel(s) own website(s), we will, of course, match and offer the same lower rates.

▶ Booking Procedure

Reservation can be made by internet. Please use the online registration form on eanm13.eanm.org.

▶ Cancellation Deadlines

All cancellations must be notified in writing to dm&c (eanm13@dm-and-c.com).

In the event of a cancellation after the deadline, dm&c and the hotel will try to resell the room to avoid cancellation fees. If this is not possible, the following cancellation fees will be charged:

For the following hotels: **HOTEL DE LA CITÉ CONCORDE, RADISSON BLU LYON:**

In the event of a cancellation of your room booking / reduction of room nights:

- **until April 16, 2013:** no cancellation fee / free of charge
- **after April 16, 2013** or no-show: 100% of the reserved stay

For the following hotels: **ALLIANCE HOTEL VILLEURBANE, AXOTEL PERRACHE, BEST WESTERN CHARLEMAGNE, BEST WESTERN DU PONT WILSON, BEST WESTERN SAPHIR, CAMPANILE BERGES DU RHÔNE, CAMPANILE PART DIEU, COLLÈGE HOTEL, GLOBE ET CECIL HOTEL, GRAND HOTEL DES TERREAUX, LE ROOSEVELT, RESIDENCE TEMPORIM CITÉ INTERNATIONAL, RESIDENCE TEMPORIM PART DIEU:**

In the event of a cancellation of your room booking / reduction of room nights:

- **until June 17, 2013:** no cancellation fee / free of charge
- **after June 17, 2013** or no-show:
 - 1 night's charge if the room was booked for 1 night
 - 2 nights' charge if the room was booked for 2 or more nights

For the following hotels: **B4 LYON – GRAND HOTEL, HILTON LYON, LA REINE ASTRID, LYON METROPOLE & SPA, HOTEL DES CONGRÈS, HOTEL LYON OUEST, PARK & SUITES – ELÉGANCE GERLAND, PARK & SUITES – ELÉGANCE VAISE, PARK & SUITES – PRESTIGE PART DIEU:**

In the event of a cancellation of your room booking / reduction of room nights:

- **until June 17, 2013:** no cancellation fee / free of charge
- **after June 17, 2013** or no-show: 100% of the reserved stay

For the following hotels: **ALL SEASONS PART DIEU, MGALLERY CARLTON, MGALLERY LE ROYAL, ALL MERCURE HOTELS, ALL NOVOTEL HOTELS AND ALL IBIS HOTELS, SOFITEL BELLECOUR:**

In the event of a cancellation of your room booking / reduction of room nights:

- **until August 28, 2013:** no cancellation fee / free of charge
- **after August 28, 2013:**
 - 1 night's charge if the room was booked for 1 or 2 nights
 - 2 nights' charge if the room was booked for 3 or 4 nights
 - 3 nights' charge if the room was booked for 5 or more nights
 - No-show: 100% of the reserved stay

All refunds will be processed after the congress.

▶ **Guarantee and Payment**

■ **Guarantee via credit card**

Visa, Eurocard/Mastercard, Diners Club, American Express are accepted.

By sending the full credit card details (type of card, cardholder's name, card number, expiry date, CVC code) during the online booking the requested room is guaranteed on behalf of the cardholder (also for late arrival). The hotels might charge up to three nights' deposit on the given card. All open payments must be arranged directly by the participant in the hotel upon departure.

■ **Pre-payment via bank transfer**

If you would like to pre-pay a booked room, please contact dm&c via email (eanm13@dm-and-c.com) before September 1, 2013 to receive an invoice. The money must be transferred to the account given on that invoice. A full pre-payment is requested. After receiving the payment, dm&c will send you a payment confirmation with all hotel details, which will also be your hotel voucher.

▶ **Room Availability**

Rooms will be assigned on a first come, first served basis. Should your chosen dates OR room type not be available online, please contact us at eanm13@dm-and-c.com.

▶ **Group Bookings**

For information on the procedure for hotel group bookings, please contact dm&c at eanm13@dm-and-c.com.

▶ **Liability**

Should technical reasons beyond the control of the organisers make any changes necessary, they cannot be held responsible. The organisers are acting as agents and cannot be held responsible for any loss, injury or damages to any person or property whatever the cause may be. The liability of persons and enterprises providing means of transportation or other services, however, remains unaffected. The participant(s) take(s) part in any tour and trip at his or her own risk. Only written arrangements are binding. Sole congress city is Lyon. With your registration you authorise the organisers to use all registration data given in the registration form for the computerised handling of the congress and further communication with all respective suppliers. Austrian law shall apply and place of jurisdiction is Vienna.

List of Hotels

All mentioned rates are valid for 2013, in EURO (€) per room per night, including breakfast, city tax and VAT.

All room requests will be handled on a first come, first served basis and are subject to availability and final confirmation.

No.	Hotel	Price (€) / Single	Price (€) / Double Single Use	Price (€) / Double	Distance to MiCo (Congress Venue)
4 Star Deluxe					
1	MGallery Carlton		241,65	263,30	25 minutes by Bus C5
2	MGallery Le Royal	231,65	251,65	273,30	25 minutes by Metro and Bus C1
3	Sofitel Bellecour		251,65	273,30	25 minutes by Metro and Bus C1
4 Star					
4	B4 Lyon – Grand Hotel		261,65	283,30	15 minutes by Bus C5
5	Best Western Charlemagne		118,65	130,30	30 minutes by Metro and Bus C1
6	Best Western du Pont Wilson		161,15	188,30	30 minutes by Metro and Bus C1
7	Best Western Saphir		204,65	226,30	25 minutes by Metro and Bus C1
8	Collège Hotel		161,65	182,30	30 minutes by Metro and Bus C1
9	Globe et Cecil Hotel		154,65	188,30	20 minutes by Metro and Bus C1
10	Grand Hotel des Terreaux		135,65	176,30	30 minutes by Bus C5
11	Hilton Lyon		280,65	306,30	next to the CCC Lyon
12	Hotel de la Cité Concorde		251,65	275,30	next to the CCC Lyon
13	La Reine Astrid		236,65	258,30	10 minutes by Bus C1
14	Le Roosevelt		139,65	157,30	15 minutes by Bus C1
15	Lyon Metropole & Spa		241,65	261,30	15 minutes by Taxi
16	Mercure Beaux Arts		166,65	183,30	30 minutes by Bus C1
17	Mercure Brotteaux		166,65	183,30	20 minutes by Bus C1
18	Mercure Charpennes		166,65	183,30	15 minutes by Metro and Bus C1
19	Mercure Château Perrache		166,65	183,30	25 minutes by Metro and Bus C1
20	Mercure Lumiere		166,65	183,30	30 minutes by Bus C1
21	Mercure Part Dieu		181,65	198,30	30 minutes by Bus C1

No.	Hotel	Price (€) / Single	Price (€) / Double Single Use	Price (€) / Double	Distance to MiCo (Congress Venue)
22	Mercure Plaza Republique		166,65	183,30	30 minutes by Bus C1
23	Mercure Saxe Lafayette		171,65	188,30	15 minutes by Bus C1
24	Novotel Bron		156,65	173,30	15–20 minutes by Taxi
25	Novotel Confluence		181,65	198,30	35 minutes by Bus C5
26	Novotel Gerland		166,65	183,30	30 minutes by Metro and Bus C1
27	Novotel Nord		146,65	163,30	15–20 minutes by Taxi
28	Novotel Part Dieu		181,65	198,30	20 minutes by Bus C1
29	Park & Suites – Prestige Part Dieu		321,65	323,30	30 minutes by Bus C1
30	Radisson Blu Lyon		251,65	273,30	15 minutes by Bus C1
3 Star					
31	All Seasons Part Dieu		135,10	136,20	30 minutes by Bus C1
32	Alliance Hotel Villeurbanne (from April 2013: Ibis Styles Villeurbanne)		161,10	177,20	10 minutes by Taxi
33	Axotel Perrache		97,10	109,20	40 minutes by Metro and Bus C1
34	Campanile Berges du Rhône		133,10	144,20	35 minutes by Bus C5
35	Campanile Part Dieu		148,10	159,20	30 minutes by Bus C1
36	Hotel des Congrès		156,10	172,20	15 minutes on foot
37	Hotel Lyon Ouest		161,10	177,20	10–15 minutes by Taxi
38	Ibis Caluire		112,10	123,20	20 minutes by Bus C1
39	Ibis Gerland 7eme (Pont Pasteur)		115,10	126,20	30 minutes by Bus C5
40	Ibis Gerland Rue Merieux		113,10	124,20	30 minutes by Metro and Bus C1
41	Ibis Gare Part Dieu		135,10	146,20	30 minutes by Bus C1
42	Ibis Part Dieu Les Halles		128,10	139,20	35 minutes by Bus C1
43	Ibis Perrache		119,10	130,20	35 minutes by Metro and Bus C4
44	Park & Suites – Élégance Gerland		207,10	208,20	30 minutes by Metro and Bus C1
45	Park & Suites – Élégance Vaise		200,10	201,20	35 minutes by Metro and Bus C1
46	Residence Temporim Cité International		173,40	204,82	next to the CCC Lyon
47	Residence Temporim Part Dieu		122,69	154,11	30 minutes by Bus C1

EANM 2013 Hotels

4 Star Deluxe Level Hotels

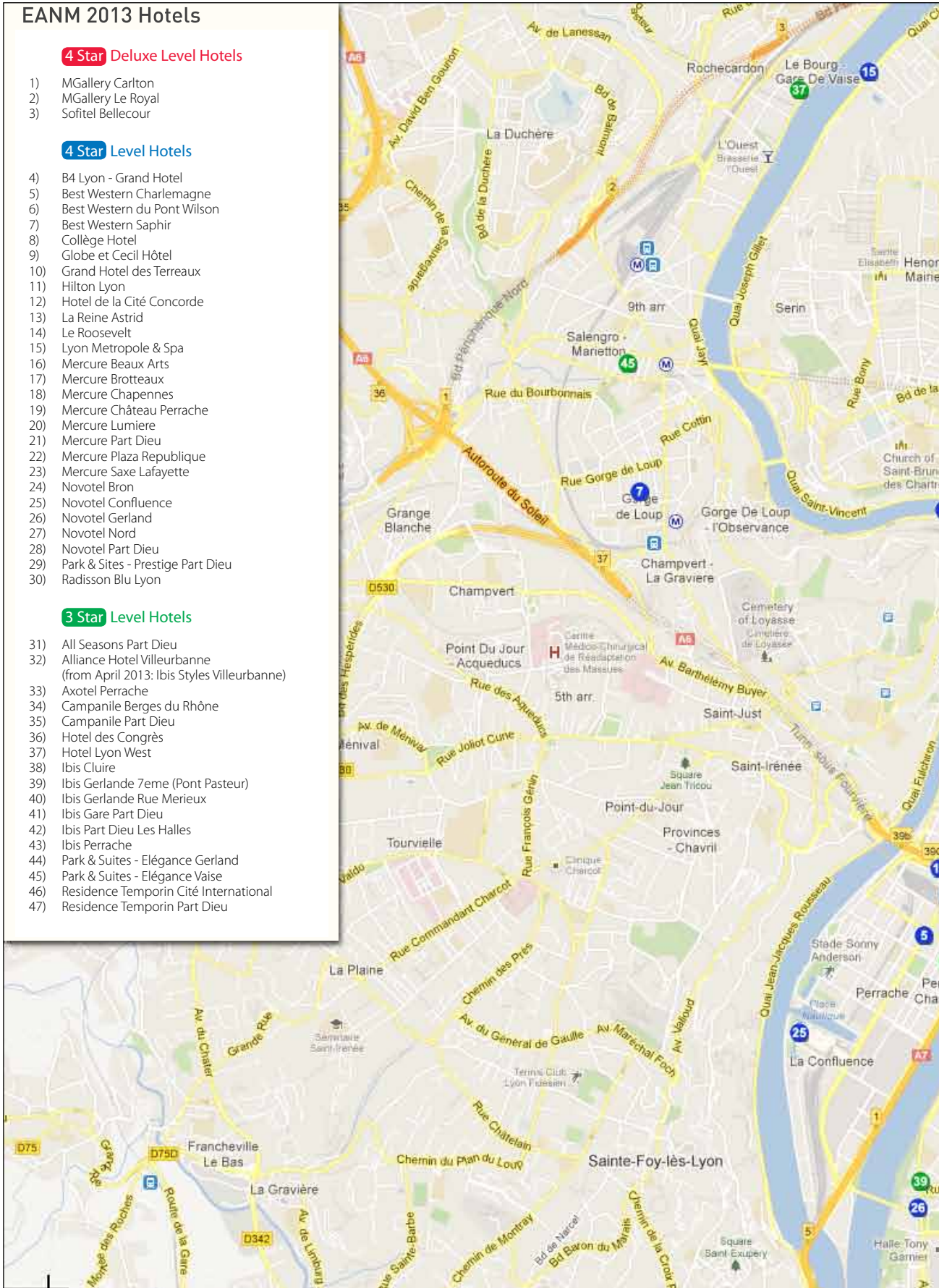
- 1) MGallery Carlton
- 2) MGallery Le Royal
- 3) Sofitel Bellecour

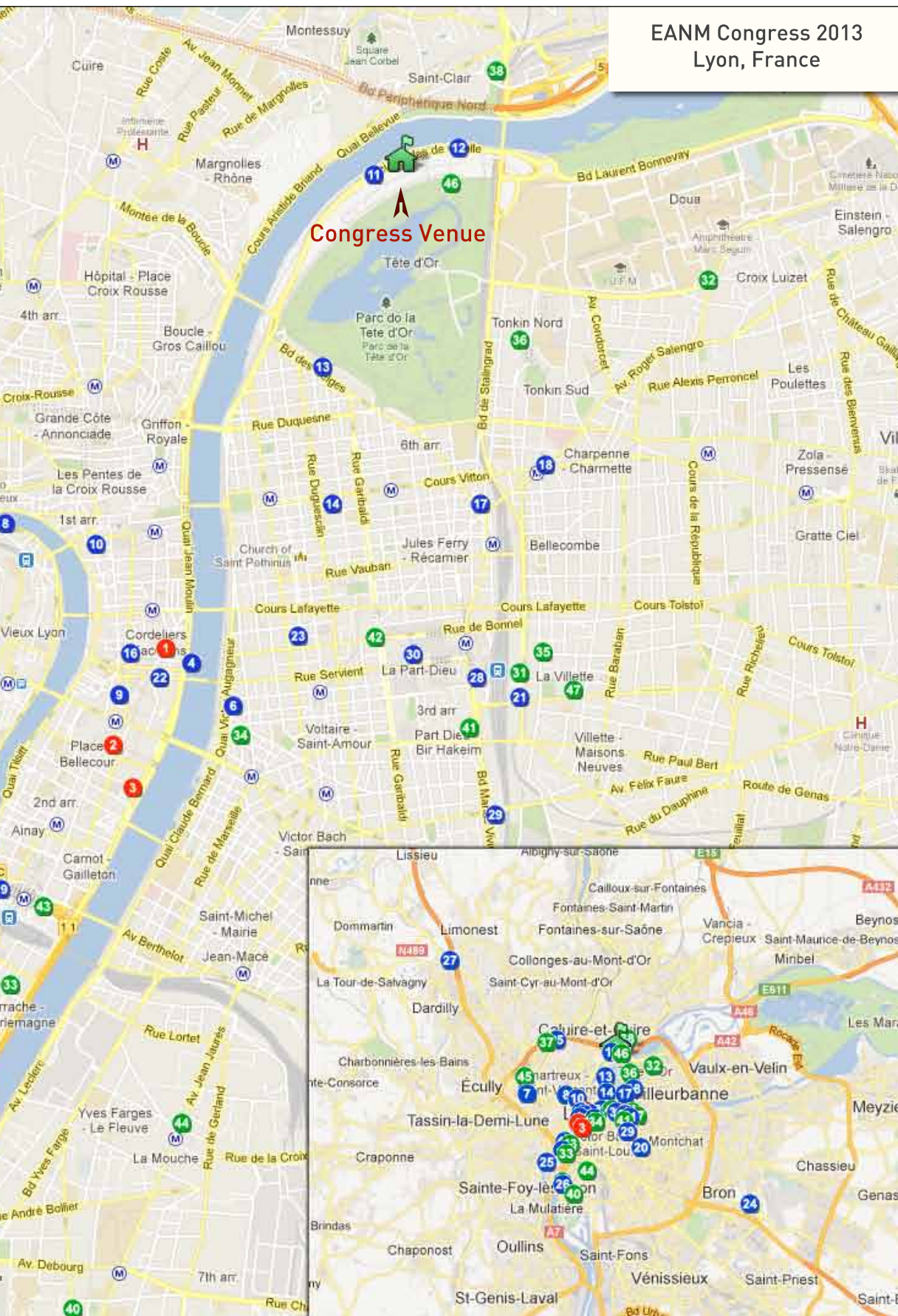
4 Star Level Hotels

- 4) B4 Lyon - Grand Hotel
- 5) Best Western Charlemagne
- 6) Best Western du Pont Wilson
- 7) Best Western Saphir
- 8) Collège Hotel
- 9) Globe et Cecil Hôtel
- 10) Grand Hotel des Terreaux
- 11) Hilton Lyon
- 12) Hotel de la Cité Concorde
- 13) La Reine Astrid
- 14) Le Roosevelt
- 15) Lyon Metropole & Spa
- 16) Mercure Beaux Arts
- 17) Mercure Brotteaux
- 18) Mercure Chapennes
- 19) Mercure Château Perrache
- 20) Mercure Lumiere
- 21) Mercure Part Dieu
- 22) Mercure Plaza Republique
- 23) Mercure Saxe Lafayette
- 24) Novotel Bron
- 25) Novotel Confluence
- 26) Novotel Gerland
- 27) Novotel Nord
- 28) Novotel Part Dieu
- 29) Park & Sites - Prestige Part Dieu
- 30) Radisson Blu Lyon

3 Star Level Hotels

- 31) All Seasons Part Dieu
- 32) Alliance Hotel Villeurbanne
(from April 2013: Ibis Styles Villeurbanne)
- 33) Axotel Perrache
- 34) Campanile Berges du Rhône
- 35) Campanile Part Dieu
- 36) Hotel des Congrès
- 37) Hotel Lyon West
- 38) Ibis Cluire
- 39) Ibis Gerlande 7eme (Pont Pasteur)
- 40) Ibis Gerlande Rue Merieux
- 41) Ibis Gare Part Dieu
- 42) Ibis Part Dieu Les Halles
- 43) Ibis Perrache
- 44) Park & Suites - Elégance Gerland
- 45) Park & Suites - Elégance Vaïse
- 46) Residence Temporin Cité International
- 47) Residence Temporin Part Dieu





Hotel Descriptions

4 Star Deluxe

1) MGALLERY CARLTON

Located on Lyons' Peninsula, the Carlton has kept its unique character and charm over the years, offering 83 rooms, including 4 circular Junior Suites and 19 Superior rooms, all with minibar, bathroom with bathtub or shower and hair dryer. Since it opened in 1894, the Carlton has been Lyon's foremost luxury hotel. WiFi available in the rooms.



Distance to the Congress Venue: approx. 25 minutes by Bus C5

Price in Euro per room per night, including Buffet breakfast, city tax and VAT:

Double Single Use € 241,65 / Double Room € 263,30

2) MGALLERY LE ROYAL

Located on the magnificent Place Bellecour, this hotel is reminiscent of a large family townhouse. The Côté Cuisine restaurant offers guests a culinary voyage sampling the local Lyon cuisine and the creations of the Institut Paul Bocuse. The hotel offers elegance and modernity with 74 rooms and suites.



Distance to the Congress Venue: approx. 15 minutes by Metro and Bus C1

Price in Euro per room per night, including Buffet breakfast, city tax and VAT:

Single Room € 231,65 / Double Single Use € 251,65 / Double Room € 273,30

3) SOFITEL BELLECOUR

The hotel is situated on the banks of the Rhône River near Place Bellecour, the World Heritage Site of Vieux Lyon, and a constellation of Lyon's best museums, boutiques and cultural attractions. The hotel features the Michelin-starred restaurant Les Trois Dômes and chic Le Melhor bar, Le Silk Brasserie and Le Light Bar. The atmosphere of each of the 164 rooms in this hotel in Lyon is defined by 1 of 2 themes: contemporary relaxed ambiance or traditional French style.



Distance to the Congress Venue: approx. 15 minutes by Metro and Bus C1

Price in Euro per room per night, including Buffet breakfast, city tax and VAT:

Double Single Use € 251,65 / Double Room € 273,30

4 Star

4) B4 LYON – GRAND HOTEL

The Grand Hotel, built towards the end of the 19th century, combines elegance, charm and the tradition of the past and is located on the banks of the Rhône. Near a busy pedestrian shopping area, between Bellecour and the Opera and just a few minutes walk away from the old Lyon. The 140 rooms and suites are air-conditioned and soundproof and equipped with internet access, safe, satellite TV and hair dryer. 8 natural daylight meeting rooms for 10 to 70 people are available.



Distance to the Congress Venue: approx. 15 minutes by Bus C5

Price in Euro per room per night, including Buffet breakfast and VAT:

Double Single Use € 261,65 / Double Room € 283,30

5) BEST WESTERN CHARLEMAGNE

The hotel is located in the centre of town just a stone's throw from Lyon Perrache main train and metro stations. It has 2 restaurants, meeting facilities that accommodate up to 120, complimentary newspaper, 24-hour security, safe deposit box and much more. The rooms are nice and have cable television with canal plus and the sport channel, AM/FM alarm clock, coffee maker, dataports, hairdryer, room service and balcony rooms are available.



Distance to the Congress Venue: approx. 25 minutes by Metro and Bus C1

Price in Euro per room per night, including Buffet breakfast and VAT:

Double Single Use € 118,65 / Double Room € 130,30

EARLY BOOKING RATE available until May 31, 2013.

6) BEST WESTERN DU PONT WILSON

The hotel was entirely renovated in 2010 and guarantees a high standard of service. Just a stone's throw from the banks of the Rhône (with jogging and cycle paths) and close to the old centre of Lyon, this establishment is in a strategic geographical location between Place Bellecour and the Part-Dieu business district. A contemporary, sophisticated design is the keynote of this hotel. The 54 non-smoking rooms, including 7 suites with unrestricted views over the Rhône, offer many facilities including air conditioning, LCD televisions, cable/satellite channels and free WiFi.



Distance to the Congress Venue: 15 minutes by Metro and Bus C1

Price in Euro per room per night, including Buffet breakfast and VAT:

Double Single Use € 161,15 / Double Room € 188,30

7) BEST WESTERN SAPHIR LYON

The hotel is located in the heart of Lyon. Easily reachable from the motorways, it only takes ten minutes to drive to the train station Perrache. The historic old city centre and shopping area are only one metro station away.



Spacious rooms, all equipped with a comfortable bedding, feature air-conditioning, satellite television, WiFi (against charge), bathrooms and hairdryers. All the rooms are in a quiet area or on the hotel's courtyard. The hotel provides five large meeting rooms for up to 150 people, fully equipped and air-conditioned and most meeting rooms have daylight. The restaurant Les Tournesols offers a different theme every day: terroir, tartines, salads and seafood.

Distance to the Congress Venue: approx. 30 minutes by Metro and Bus C1

Price in Euro per room per night, including Buffet breakfast and VAT:

Double Single Use € 204,65 / Double Room € 226,30

EARLY BOOKING RATE available until May 31, 2013.

8) COLLÈGE HOTEL

The hotel is in walking distance of Fourvière Basilic and downtown. Original concept of the college theme: Breakfast study room, bar on teacher's desk, library meeting room with video projector and screen, garden roof terrace, gymnasium, garage, DSL and complimentary WiFi internet access. 39 air conditioned rooms, flat panel TV screens, panoramic city views, terraces and balconies.



Distance to the Congress Venue: approx. 30 minutes by Metro and Bus C1

Price in Euro per room per night, including Buffet breakfast and VAT:

Double Single Use € 161,65 / Double Room € 182,30

9) GLOBE ET CECILE HOTEL

The hotel features 60 well appointed bedrooms decorated with taste and all equipped with modern facilities. The breakfast room and a comfortable lounge are open to the guests. A meeting area is also at disposal with 100 square metres of space including modern equipment. WiFi is available in all areas and is free of charge.



Distance to the Congress Venue: approx. 20 minutes by Metro and Bus C1

Price in Euro per room per night, including Buffet breakfast and VAT:

Double Single Use € 154,65 / Double Room € 188,30

10) GRAND HOTEL DES TERREAUX

This hotel is located on Lyon's Peninsula and offers an indoor swimming pool and rooms with flat-screen TVs and free WiFi. It is located 200 metres from Place des Terreaux. The 53 guest rooms are decorated in a traditional style and have modern en suite bathrooms equipped with a hairdryer, bathrobe and slippers. All rooms are serviced by an elevator. The hotel also has a bar where guests can relax with a drink in the evening.



Distance to the Congress Venue: approx. 25 minutes by Bus C5

Price in Euro per room per night, including Buffet breakfast and VAT:

Double Single Use € 135,65 / Double Room € 176,30

EARLY BOOKING RATE available until May 31, 2013.

11) HILTON LYON

Overlooking the River Rhône and right next to the Congress Centre, the hotel is 5 minutes' drive from Lyon attractions. It has 16 meeting rooms, an Executive Lounge, business centre and WiFi access in all public areas.



Unwind in the Jacuzzi or sunbath on the terrace with River Rhône views. The rooms are of a large size. The bathrooms all have a separate shower and bath tub. Both room and bathroom are in very good condition. With all the comfort and accessories you would expect in a hotel of this standing.

Distance to the Congress Venue: approx. 2 minutes by foot
Price in Euro per room per night, including Buffet breakfast and VAT:

Double Single Use € 280,65 / Double Room € 306,30

12) HOTEL DE LA CITÉ CONCORDE

The hotel is ideally located in the heart of "La Cité Internationale" and next to the Congress Centre. Built on the border of the "Parc de la Tête d'Or" and only 10 minutes away from Lyon's historical centre, this cosy, warm and modern hotel features 164 rooms including 5 suites, a restaurant with terrace for 70 people, a bar with terrace for 50 people and 14 air-conditioned meeting rooms, all with daylight. Free WiFi access in all public areas and hotel rooms.



Distance to the Congress Venue: approx. 2 minutes by foot
Price in Euro per room per night, including Buffet breakfast and VAT:

Double Single Use € 251,65 / Double Room € 275,30

EARLY BOOKING RATE available until April 30, 2013.



13) LA REINE ASTRID

La Reine Astrid is located in a warm and quite residential area of Lyon, opposite the Tête d'Or Park. The 88 beautifully appointed oversized 1 and 2 bedroom suites are equipped with all modern amenities and facilities including individually controlled air-conditioning, a full kitchen, television with pay TV channels, internet access and in-room safe.



Distance to the Congress Venue: approx. 5 minutes by Bus C1

Price in Euro per room per night, including Buffet breakfast and VAT:

Double Single Use € 236,65 / Double Room € 258,30

EARLY BOOKING RATE available until May 15, 2013.

14) LE ROOSEVELT

Le Roosevelt is located in the heart of central Lyon, a 10-minute walk from the opera and 3 stations from Place Bellecour. The modern guest rooms are equipped with air conditioning, flat-screen satellite TV and en suite facilities including a bath tub. Foch metro station is only 100 metres from Le Roosevelt, providing access to the city's main sites. Bicycle rental services are 30 metres away. Secure private parking is available for guests arriving by car. Complimentary WiFi internet.



Distance to the Congress Venue: approx. 15 minutes on foot and Bus C1 (Cité International)

Price in Euro per room per night, including Buffet breakfast and VAT:

Double Single Use € 139,65 / Double Room € 157,30

15) LYON METROPOLE & SPA

The hotel is a prestigious Lyon hotel, located in the heart of the city on the banks of the Saône River. It offers 118 rooms and a 2500 m² spa with hot tubs, saunas and an indoor swimming pool, as well as an Olympic-size outdoor pool. All rooms and suites have an LCD TV and some have a seating area. French and healthy-eating options are offered on the marine-style restaurant's terrace, while the bar has a large champagne and whiskey list. Lyon city centre is 3 km from the hotel. Public parking is available on site and Cuire metro station is a 20-minute walk away. Free WiFi.



Distance to the Congress Venue: 15 minutes by Taxi

Price in Euro per room per night, including Buffet breakfast and VAT:

Double Single Use € 241,65 / Double Room € 261,30

16) MERCURE BEAUX ARTS

In a beautiful 19th century building in the Lyon style of architecture, this Art Deco hotel is located in the heart of the peninsular between the Rhône and Saône Rivers, at the beginning of streets dedicated to shopping and pedestrians. The tourist sites of the old city are 3 minutes away by foot. This hotel offers satellite TV in all its 75 rooms. The hotel features a bar in the lobby that is open until 11 pm. Complimentary WiFi.



Distance to the Congress Venue: 30 minutes by Bus C1

Price in Euro per room per night, including Buffet breakfast and VAT:

Double Single Use € 166,65 / Double Room € 183,30

17) MERCURE BROTTAUX

The hotel is conveniently located near the centre of Lyon. There are 57 well-appointed, air-conditioned rooms at the hotel. Guests can make use of the following room facilities: coffee/tea maker, in-room safe, direct-dial phone and alarm clock. Additional amenities in the rooms include desk and minibar. Meal options include a cafeteria. WiFi is free of charge, high-speed wired connection is offered for an additional fee.



Distance to the Congress Venue: 20 minutes by Bus C1

Price in Euro per room per night, including Buffet breakfast and VAT:

Double Single Use € 166,65 / Double Room € 183,30

18) MERCURE CHARPENNES

The hotel is just 2 metro stops or 3 tram stops from the Gare Part-Dieu train station in the heart of the business district of Lyon. It features 98 well-equipped rooms and 8 meeting facilities for up to 130 people. Thanks to the nearby metro station, guests can reach the city centre. WiFi is available in all areas and is free of charge.



Distance to the Congress Venue: approx. 15 minutes by Metro and Bus C1

Price in Euro per room per night, including Buffet breakfast and VAT:

Double Single Use € 166,65 / Double Room € 183,30

19) MERCURE CHÂTEAU PERRACHE

The hotel is located in the very heart of Lyon, next to the train station of Perrache, and 10 minutes walking distance from the Bellecour square. The building in pure Art Nouveau has been re-decorated in an elegant and classic style and offers 111 rooms, 2 suites, 1 restaurant open Monday to Friday and small dishes at the "Riviera Express" bar, every day until midnight. The hotel has 11 meeting rooms in different sizes. Complimentary WiFi is available in all areas.



Distance to the Congress Venue: approx. 25 minutes by Metro and Bus C1
 Price in Euro per room per night, including Buffet breakfast and VAT:
Double Single Use € 166,65 / Double Room € 183,30

20) MERCURE LUMIERE

The hotel is located 10 minutes by metro from the Gare Part-Dieu train station, the city centre and the old Lyon. The 78 air-conditioned rooms are equipped with tea and coffee makers, as well as safe facilities. A private paying indoor car park, four meeting rooms, a bar and a restaurant opened during the week are provided. The metro station Sans Souci is just outside the door, for a fast connection to the centre and the congress venue. Complimentary WiFi is available in all areas.



Distance to the Congress Venue: approx. 30 minutes by Bus C1
 Price in Euro per room per night, including Buffet breakfast and VAT:
Double Single Use € 166,65 / Double Room € 183,30

21) MERCURE PART DIEU

Next to the train station, the hotel is located in the centre of Lyon's business district. Its location has direct access to both the airport and major road networks, making it ideal for business and leisure trips. The 108 soundproofed and air-conditioned rooms are fitted with a 40-inch LCD TV, hairdryer and tea and coffee making facilities. A buffet breakfast and traditional French cuisine is served in Lyon Part Dieu's restaurant. Guests can enjoy a drink at the hotel's wine bar. Complimentary WiFi is available in all areas.



Distance to the Congress Venue: approx. 30 minutes by Bus C1
 Price in Euro per room per night, including Buffet breakfast and VAT:
Double Single Use € 181,65 / Double Room € 198,30

22) MERCURE PLAZA REPUBLIQUE

Located on Lyon's Peninsula, this hotel is in the city centre and a 10-minute walk from Old Lyon. It offers soundproofed accommodation with air conditioning and free WiFi internet access. The 78 guest rooms are contemporary in style and equipped with satellite TV, a minibar and tea and coffee making facilities. In the evening guests are invited to relax in the hotel's Plaza Bar. The hotel is just 400 metres from the Cordeliers Bourse Metro and Tramway stops. Complimentary WiFi is available in all areas.



Distance to the Congress Venue: approx. 25 minutes by Metro and Bus C1
 Price in Euro per room per night, including Buffet breakfast and VAT:
Double Single Use € 166,65 / Double Room € 183,30

23) MERCURE SAXE LAFAYETTE

Located in central Lyon, this hotel is just a 10-minute walk from Part-Dieu train station. It offers air-conditioned guest rooms with satellite TV, free WiFi access in all areas and a fitness room with an indoor swimming pool. The 156 rooms are decorated in a contemporary style and feature a minibar.



Distance to the Congress Venue: approx. 15 minutes by Bus C1
 Price in Euro per room per night, including Buffet breakfast and VAT:
Double Single Use € 171,65 / Double Room € 188,30

24) NOVOTEL BRON

This hotel is 3 km from the centre of Bron and close to the A43 motorway. With a modern décor, all the 190 air-conditioned rooms feature a flat-screen TV with satellite channels, a minibar and a private bathroom with free toiletries and a bath or shower. This hotel is 19 km from Saint-Exupéry Airport and 10 km from Part-Dieu train station. Wireless Internet Hotspots are available in public areas and are free of charge.



Distance to the Congress Venue: approx. 15-20 minutes by Taxi
 Price in Euro per room per night, including Buffet breakfast and VAT:
Double Single Use € 156,65 / Double Room € 173,30



25) NOVOTEL CONFLUENCE

Close to the town centre, the hotel is located in the heart of the new Confluence district between the Rhône and Saône Rivers. It has 150 modern rooms. Modernity and comfort are combined by innovative glass partition between the bedroom and bathroom, rain shower or bathtub, TV, tea and coffee making facilities, and safe. The hotel has a lounge bar with a terrace overlooking the River Saône, free WIFI throughout the hotel, meeting rooms & a fitness centre.



Distance to the Congress Venue: approx. 35 minutes by Bus C5
 Price in Euro per room per night, including Buffet breakfast and VAT:
Double Single Use € 181,65 / Double Room € 198,30

26) NOVOTEL GERLAND

This hotel is located on the banks of Rhône River. The 186 air-conditioned guestrooms have a modern décor and feature a flat-screen TV with satellite channels and a minibar. Some of the rooms offer a seating area with a sofa. The Novotel Café provides a daily buffet breakfast in its dining area or a continental breakfast in guests' rooms. Debourg Metro station is a 10-minute walk from the hotel and provides direct access to the Lyon Part-Dieu train station. WiFi is available in all areas and is free of charge.



Distance to the Congress Venue: approx. 30 minutes by Metro and Bus C1
 Price in Euro per room per night, including Buffet breakfast and VAT:
Double Single Use € 166,65 / Double Room € 183,30

27) NOVOTEL NORD

The 107 guestrooms of the hotel feature minibars, as well as coffee and tea makers. In addition to desks and safes, guestrooms offer phones. Satellite television is provided. Rooms also include windows that open and blackout drapes/curtains. Guests may request irons/ironing boards and wake-up calls. This property has a 24-hour business centre and offers small meeting rooms. Complimentary WiFi is available in public areas.



Distance to the Congress Venue: approx. 15-20 minutes by Taxi
 Price in Euro per room per night, including Buffet breakfast and VAT:
Double Single Use € 146,65 / Double Room € 163,30

28) NOVOTEL PART DIEU

The hotel is situated 5 minutes away from the train station by foot and 10 minutes away from the historic centre by car and features 124 sound-proof and air-conditioned rooms equipped in a modern comfort. The restaurant and cybercafe are open from 6am until midnight, the buffet breakfast starts daily at 6am. Room service and meeting rooms are available. Complimentary WiFi is available in all areas.



Distance to the Congress Venue: approx. 20 minutes by Bus C1
 Price in Euro per room per night, including Buffet breakfast and VAT:
Double Single Use € 181,65 / Double Room € 198,30

29) PARK & SUITES – PRESTIGE PART DIEU

This Park & Suites residence features a spa area with a hot tub and sauna. It is located in the centre of Lyon, just 1 km from the Part-Dieu train station. The 140 suites are air-conditioned and equipped with a flat-screen satellite TV. They each have a kitchenette with a microwave and dishwasher. The hotel provides a daily buffet breakfast or a continental breakfast, which can also be taken in the guest room upon request. Garibaldi and Sans-Souci Metro stations are both 600 metres away. They provide access to Place Bellecour and Notre-Dame de Fourviere Basilica. Complimentary WiFi is available in all areas.



Distance to the Congress Venue: approx. 30 minutes by Bus C1
 Price in Euro per room per night, including Buffet breakfast and VAT:
Double Single Use € 321,65 / Double Room € 323,30

30) RADISSON BLU LYON

The hotel is located in the centre of Lyon, just 40 metres from Lyon Part Dieu train and metro station. It offers air-conditioned rooms with free WiFi access and panoramic views of the city. Each of the 245 rooms includes a TV with satellite channels, a minibar and a private bathroom with free toiletries, bathrobes and slippers. An international buffet breakfast is served daily. Guests can enjoy the region's wines at "L'Arc En Ciel" restaurant or brasserie-style cuisine at the "Bistrot De La Tour" or enjoy a cocktail at "Le Ciel de Lyon" bar, located on the 32nd floor. The hotel is less than a 10-minute walk from Les Halles Paul Bocuse shopping centre and guests have free access to Elixia fitness centre, swimming pool and hammam, a 20-minute walk away. Complimentary WiFi is available in all areas.



Distance to the Congress Venue: approx. 15 minutes by Bus C1
 Price in Euro per room per night, including Buffet breakfast and VAT:
Double Single Use € 251,65 / Double Room € 273,30

3 Star

31) ALL SEASONS PART DIEU

The designer hotel is located in the heart of the Lyons business quarter, close to the historic city centre. All 99 rooms have a contemporary feel and are soundproofed and air-conditioned. The restaurant "All 54" is located in the hotel and serves traditional French cuisine using fresh produce. A computer with free internet access and a printer is provided at the 24-hour reception. There is also a children's play area with video games. Tête d'Or Park is 3 km from the hotel and Place Bellecour in the old town is 2.7 km away. Complimentary WiFi is available in all areas.



Distance to the Congress Venue: approx. 30 minutes by Bus C1
 Price in Euro per room per night, including Buffet breakfast and VAT:
Double Single Use € 135,10 / Double Room € 136,20

32) ALLIANCE HOTEL VILLEURBANNE (FROM APRIL 2013: IBIS STYLES VILLEURBANNE)

Located just 15 minutes from the heart of the city, this hotel is situated opposite the scientific and university pole of La Doua. The hotel offers 79 comfortable guestrooms that are facilitated with an array of modern amenities. An attentive room service is also available. WiFi is available in all areas and is free of charge.



Distance to the Congress Venue: approx. 10 minutes Bus C26
 Price in Euro per room per night, including Buffet breakfast and VAT:
Double Single Use € 161,10 / Double Room € 177,20
EARLY BOOKING RATE available until May 31, 2013.

33) AXOTEL PERRACHE

Set in the heart of the city, the 130 rooms are available in 4 different styles, all equipped with shower, desk and TV. Spacious and sunny, the rooms for conferences are ideal settings for business meetings. Besides, there is a terrace with flower decor where relaxation is the order of the day. WiFi is available in all areas and is free of charge.



Distance to the Congress Venue: 40 minutes by Metro and Bus C1
 Price in Euro per room per night, including Buffet breakfast and VAT:
Double Single Use € 97,10 / Double Room € 109,20
EARLY BOOKING RATE available until May 31, 2013.

34) CAMPANILE BERGES DU RHÔNE

The hotel is just 200 metres from Guillotière metro station and the Rhône. The 126 rooms are decorated in a simple style and feature air conditioning and an LCD TV. The private bathrooms are complete with a bathtub and a hairdryer. The hotel is a 15-minute walk from Rue de la République, Lyon's main shopping street and Place Bellecour. WiFi is available in all areas and is free of charge.



Distance to the Congress Venue: 35 minutes by Bus C5
 Price in Euro per room per night, including Buffet breakfast and VAT:
Double Single Use € 133,10 / Double Room € 144,20

35) CAMPANILE PART DIEU

Located opposite Lyon's Part-Dieu train station, this hotel offers air-conditioned rooms with free WiFi. The 172 guest rooms are modern and feature flat-screen TVs with satellite channels. Lyon Centre Part-Dieu is conveniently located just 800 metres from the Gare Part-Dieu-Vivier Merle metro station. WiFi is available in all areas and is free of charge.



Distance to the Congress Venue: approx. 30 minutes by Bus C1
 Price in Euro per room per night, including Buffet breakfast and VAT:
Double Single Use € 148,10 / Double Room € 159,20

36) HOTEL DES CONGRÈS

Set on the Left Bank of the River Rhône, this hotel is located 5 minutes from Lyon city centre. It offers 134 air-conditioned guest rooms including a flat-screen TV with satellite channels and a fridge. They each have a private bathroom with a bathtub and free toiletries. Part-Dieu Train Station is 2 km from the hotel and the Tête d'Or Park is just 500 metres away. WiFi is available in public areas and is free of charge.



Distance to the Congress Venue: approx. 15 minutes on foot
 Price in Euro per room per night, including Buffet breakfast and VAT:
Double Single Use € 156,10 / Double Room € 172,20



37) HOTEL LYON OUEST

Set on the banks of the Saône River, this modern hotel is located in Lyon's 9th arrondissement. It offers free WiFi access in all areas and 102 air-conditioned rooms with a flat-screen TV and satellite channels. Each guest room includes facilities for making hot drinks, a wardrobe and a work desk. They each have a telephone and an en suite bathroom with free toiletries. The hotel is 4.5 km from Old Lyon.



Distance to the Congress Venue: approx. 10-15 minutes by Taxi
 Price in Euro per room per night, including Buffet breakfast and VAT:
Double Single Use € 161,10 / Double Room € 177,20

38) IBIS CALUIRE

Situated in Caluire-et-Cuire, the hotel is close to a river and not far from the congress centre. Guests can use the in-room complimentary WiFi access. Televisions are equipped with cable/satellite channels. All accommodations provide desks and phones. In addition, amenities available on request include hair dryers, irons/ironing boards, and wake-up calls.



Distance to the Congress Venue: approx. 20 minutes by Bus C1
 Price in Euro per room per night, including Buffet breakfast and VAT:
Double Single Use € 112,10 / Double Room € 123,20

39) IBIS GERLAND 7^{ème} (PONT PASTEUR)

The hotel is ideally located just off the A7 highway, at the exit south of Lyon at the confluence of the Rhône and the Saône. It offers 129 air-conditioned rooms, functional and comfortable, bed with duvets, a big desk, Internet, TV with all the best channels and a nice bathroom with shower or tub. A restaurant with terrace, a bar serving snacks 24 hours a day and an undercover private car park. WiFi is available in all areas and is free of charge.



Distance to the Congress Venue: approx. 30 minutes by Bus C5
 Price in Euro per room per night, including Buffet breakfast and VAT:
Double Single Use € 115,10 / Double Room € 126,20

40) IBIS GERLAND RUE MERIEUX

The hotel is in the heart of the Gerland business precinct and close to restaurants. It offers 80 air-conditioned rooms of which 4 are specially adapted for guests with limited mobility. The standard rooms are equipped with 1 double bed. Functional and comfortable, perfect for working or relaxing, the rooms also feature beds with duvets, big desks, Internet, TV and a bathroom with shower or tub. A 24 hour snack bar, secure outdoor parking, a meeting room and free WiFi Internet access are also available.



Distance to the Congress Venue: approx. 30 minutes by Metro and Bus C1
 Price in Euro per room per night, including Buffet breakfast and VAT:
Double Single Use € 113,10 / Double Room € 124,20

41) IBIS GARE PART DIEU

The hotel is located in the city centre near the biggest commercial centre in Lyon. It is a 20 minutes' walk to the old town centre and a 4 minutes' walk to La Part-Dieu railway station. The hotel offers 144 refurbished rooms with air conditioning, the Courtepaille restaurant, terrace, bar & private car park. The rooms feature: a comfortable bathroom, modern decor, hardwood floor, cozy bedding with duvets, Internet, and a flat-screen TV with the best channels. Complimentary WiFi.



Distance to the Congress Venue: approx. 30 minutes by Bus C1
 Price in Euro per room per night, including Buffet breakfast and VAT:
Double Single Use € 135,10 / Double Room € 146,20

42) IBIS PART DIEU LES HALLES

Opposite the Paul Bocuse food market and close to the auditorium, the hotel has 216 rooms with free WiFi. A 10 minute walk from the train station and 30 minutes from the airport via the Rhônexpress, the hotel is served by trams and buses heading to Lyon old town, the Fourvière basilica, Place Bellecour and Tête d'Or Park. Vélov bicycle rental available at the hotel. The rooms have a big desk, TV and bathrooms with shower or tub. Enjoy the bar and restaurant with terrace, open daily for lunch and dinner. Private paying car park.



Distance to the Congress Venue: approx. 35 minutes by Bus C1
 Price in Euro per room per night, including Buffet breakfast and VAT:
Double Single Use € 128,10 / Double Room € 139,20

43) IBIS PERRACHE

The hotel is located near the main highways to Paris and Marseilles. It is just 10 minutes' walk from the Place Bellecour and Old Lyon. The hotel has 123 fully renovated and air-conditioned rooms with comfortable bathrooms, modern decors, hardwood floors, cozy beddings with duvets, hair dryer, free WiFi internet, and a flat-screen TV.



Distance to the Congress Venue: approx. 35 minutes by Metro and Bus C4

Price in Euro per room per night, including Buffet breakfast and VAT:

Double Single Use € 119,10 / Double Room € 130,20

44) PARK & SUITES - ELÉGANCE GERLAND

This Park & Suites residence is located opposite the Place Jean Jaurès Metro Station in Lyon. It offers air-conditioned suites with equipped kitchenettes. All 122 suites at the Park & Suites Elégance Lyon Gerland have satellite TV and a telephone and each kitchenette has a microwave and fridge. Additional facilities at the Park & Suites include a 24-hour reception and private parking on site. The hotel is located 3.4 km from Old Lyon. WiFi is available in all areas and is free of charge.



Distance to the Congress Venue: approx. 30 minutes by Metro and Bus C1

Price in Euro per room per night, including Buffet breakfast and VAT:

Double Single Use € 207,10 / Double Room € 208,20

45) PARK & SUITES - ELÉGANCE VAISE

This Park & Suites hotel is located 2 minutes away from the Saône River. The 54 apartments have a terrace, living room, dining area and a fully equipped kitchen. Flat-screen TV with satellite and cable channels, a Hi-Fi system is also provided. The hotel is next to Valmy metro station which provides easy access to the city's main attractions. Complimentary WiFi internet is available in the rooms.



Distance to the Congress Venue: approx. 35 minutes by Metro and Bus C1

Price in Euro per room per night, including Buffet breakfast and VAT:

Double Single Use € 200,10 / Double Room € 201,20

46) RESIDENCE TEMPORIM CITÉ INTERNATIONAL

Located directly at the Congress Centre and opposite the amphitheatre, the hotel has 104 fully decorated and equipped apartments. They feature a fully equipped kitchenette with cooking plates, refrigerator, built-in microwave oven and dishwasher, an office area and a bathroom with a Japanese influence letting the light shine through. Furthermore, shower and separated toilets, reversible air-conditioning and a flat panel television with access to satellite channels are offered. Complimentary WiFi is available in all areas.



Distance to the Congress Venue: approx. 2 minutes by foot
Price in Euro per room per night, including Buffet breakfast and VAT:

Double Single Use € 173,40 / Double Room € 204,82

47) RESIDENCE TEMPORIM PART DIEU

Each air-conditioned apartment includes a kitchen area with microwaves, dishes and cutlery, refrigerator, electric plates as well as a fully equipped bathroom: fitted sink and cupboard, bath, programmable heating. Guests can work in the office area with computer space. TV with satellite channels and free WiFi are offered.

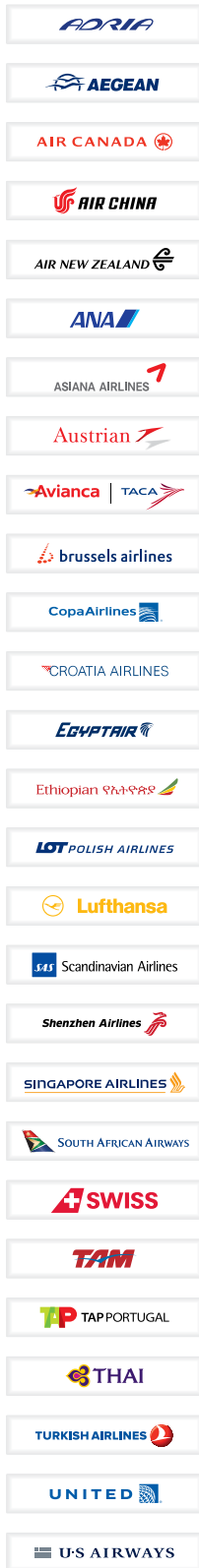


Distance to the Congress Venue: approx. 30 minutes by Bus C1

Price in Euro per room per night, including Buffet breakfast and VAT:

Double Single Use € 122,69 / Double Room € 154,11

Please visit eanm13.eanm.org/Accommodation/List of Hotels for access to a map of Lyon showing hotel locations.



Official Airline Network

SAVE UP TO 20% ON TRAVEL WITH THE STAR ALLIANCE™ NETWORK

The Star Alliance member airlines are pleased to be appointed as the Official Airline Network for **EANM 2013**.

To obtain the Star Alliance Conventions Plus discounts please follow the below steps to access the Conventions Plus online booking tool:

- Visit www.staralliance.com/conventionsplus/delegates/
- Under “Delegates login” enter conventions code **OS03A21**
- The online booking tool opens in a separate window*

*Should the online booking tool not open, please ensure that your Pop-Up blocker is disabled.

Registered participants plus one accompanying person travelling to the event can qualify for a discount of up to 20%, depending on fare and class of travel booked.

The participating airlines for this event are: Air Canada, AviancaTaca, bmi, Air China, Continental Airlines, Ethiopian Airlines, Adria Airways, Blue1, LOT Polish Airlines, SWISS International Air Lines, ANA, Austrian Airlines, Croatia Airlines, Asiana Airlines, South African Airways, Scandinavian Airlines, Brussels Airlines, THAI, Turkish Airlines, TAP Portugal, United.

Discounts are offered on most published **business** and **economy class** fares, excluding website/internet fares, senior and youth fares, group fares and Round the World fares.

Please note: For travel to/from Japan and New Zealand special fares or discounts may be offered by the participating airlines on their own network. To obtain these special fares or discounts and for booking office information please visit www.staralliance.com/conventionsplus/delegates/ and:

1. Click on “Conventions Plus Booking Contacts” and enter the conventions code **OS03A21**
2. Choose one of the participating airlines listed
3. Call the respective reservation contact listed and quote the conventions code **OS03A21** when requesting the special ticket

When making your travel plans please present confirmation of your registration or proof of attendance for the Event/Convention.

STAR ALLIANCE
THE WAY THE EARTH CONNECTS



Useful Addresses

▶ Scientific Programme & Industry Exhibition

EANM Executive Secretariat
Andreas Felser, Conference Manager
Hollandstrasse 14 / Mezzanine
1020 Vienna, Austria
Phone: +43-(0)1-212 80 30
Fax: +43-(0)1-212 80 30-9
Email: info@eanm.org
URL: eanm13.eanm.org



▶ Registration, Accommodation & Social Programme

dm&c – destination management & consulting gesmbh
Rosa B. Reyero Miguelez, Congress Manager
Gilgegasse 11/14, 1090 Vienna, Austria
Phone: +43-(0)1-409 56 31-12
Fax: +43-(0)1-409 56 31-22
Email: eanm13@dm-and-c.com
URL: www.dm-and-c.com



▶ Congress Venue

CCC – Cité | Centre de Congrès | Lyon
50 Quai Charles de Gaulle
69463 Lyon Cedex 06, France
Phone: +33-(0)4-72 82 26-26
Email: info@ccc-lyon.com
URL: www.ccc-lyon.com

CITÉ | CENTRE DE CONGRÈS | LYON

▶ Recommended Freight Forwarder, Customs Broker & On-site Handling Agent

IML Messe Logistik GmbH
Robert Kokoschik
Austria Center Vienna
Bruno-Kreisky-Platz 1, 1220 Vienna, Austria
Phone: +43-(0)1-26069-2205
Fax: +43-(0)1-26069-2204
Cell: +43-(0)664-41 35 474
Email: robert.kokoschik@iml-vienna.at



▶ Exhibitor Support Service

MAW – Medizinische Ausstellungs- und Werbegesellschaft
International Exhibitions & Advertising
Andrea Etz, Antonia-Sophie Doppler, Gerda Maierhofer
Freyung 6/3/3, 1010 Vienna, Austria
Phone: +43-(0)1-536 63-42, -75 or -15
Fax: +43-(0)1-535 60 16
Email: eanm2013@media.co.at
URL: www.maw.co.at



Imprint

Publisher:

European Association of Nuclear Medicine
c/o vereint: Association & Conference Management Ltd.
Hollandstrasse 14/Mezzanine, 1020 Vienna, Austria
Phone: +43-(0)1-212 80 30 | Fax: +43-(0)1-212 80 30-9
Email: info@eanm.org | URL: www.eanm.org



Editors

Prof. Dominique Le Guludec, EANM Congress President 2013
Andreas Felser, EANM Congress Manager
Annetta Florentis, EANM Executive Secretariat

Content

No responsibility is taken for the correctness of this information.
Information as per date of printing January 2013.

Association & Conference Management

vereint: Association & Conference Management Ltd.
Hollandstrasse 14/Mezzanine, 1020 Vienna, Austria
Phone: +43-(0)1-533 35 42 | Fax: +43-(0)1-533 35 42-19
Email: office@vereint.com | URL: www.vereint.com



vereint Ltd. is licensee of the
Austrian Eco-label for
„Green Meetings and Green Events“

Layout & Design

kreativ · Mag. Evelyne Sacher
Linzer Strasse 358a/1/7, 1140 Vienna, Austria
Phone: +43-(0)1-416 52 27 | Fax: +43-(0)1-416 85 26
Email: office@kreativ-sacher.at | URL: www.kreativ-sacher.at



Printing

Laber-Druck Ges.m.b.H.
Hubert Jaud
Michael-Rottmayr-Strasse 46, 5110 Oberndorf, Austria
Phone: +43-(0)6272-7135-426 | Fax: +43-(0)6272-7135-499
Email: hubert.jaud@laberdruck.at





European School of Nuclear Medicine

February 08–09

EANM/ESTRO Educational Seminar on PET
in Radiation Oncology
In Brussels

February 21–23

Course on PET/CT in Oncology, basic

April 20–21

Neuroimaging Course

April 27–28

Technologist PET/CT Course, basic

May 02–03

Therapy and Basic Dosimetry Course

May 23–25

Course on PET/CT in Oncology, advanced

September 05–07

Course on PET/CT in Oncology, basic

September 14–15

Cardiovascular Course

September 21–22

Technologist PET/CT Course, advanced

October 05–06

Paediatric Course

November 08–09

Trends in PET-Methodologies

November 14–15

Dosimetry Course, advanced

November 22–23

EANM/ESTRO Educational Seminar on PET
in Radiation Oncology

November 28–30

Course on PET/CT in Oncology, advanced



How to register

Each course may be attended by a maximum of 20 participants.
Registration will be on a first-come, first-served basis.
To register for the ESNM Learning Courses,
please use our online registration system:
www.eanm.org/ESNM/Education/LearningCourses
→ select the course for which you would like to register.

If online registration is not possible please contact us:
EANM Educational Facility · Mrs. Mirijam Hajek-Ayadi
Hollandstraße 14/Mezzanine, 1020 Vienna, Austria
Tel: +43-(0)1-212 80 30, Fax: +43-(0)1-212 80 30-9
E-Mail: info@eanm.org

All courses will be held at the EANM Educational Facility
in Vienna and in English; except where otherwise indicated.

www.eanm.org

ESNM

Learning
Courses
2013

Please visit www.eanm.org
for further information



GE imagination at work

SIEMENS
medical

PHILIPS

HERMES
HERMES MEDICAL SOLUTIONS



UNION EUROPÉENNE DES MÉDECINS SPÉCIALISTES
EUROPEAN UNION OF MEDICAL SPECIALISTS
SECTION AND BOARD OF NUCLEAR MEDICINE

news · news · news · news · news ·

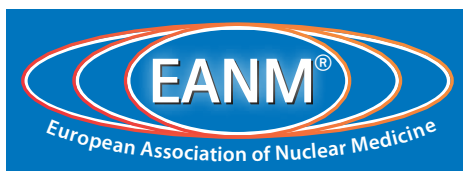
Additional exam date in 2013 EANM'13 Congress Lyon, October 19–23

Make the most of your valuable time and
combine the outstanding scientific congress of
EANM with the FEBNM fellowship exam.



prove your skills on a European level
Fellowship of the European Board of Nuclear Medicine

<http://uems.eanm.org>



EANM 2013 Lyon goes mobile



- ▶ for Apple and Android
- ▶ available from October 1, 2013
- ▶ EANM Congress App features
 - Session Overview connected with the EANM Interactive Programme Planner (IPP)
 - Floorplans
 - Exhibitors Overview
 - Poster Exhibition Guide
 - General Information



SIEMENS

Advancing your lead in molecular imaging

www.siemens.com/mi

Molecular imaging is one of the fastest growing imaging procedures worldwide. This widespread acceptance is a catalyst for transforming disease management and patient care as we know it today. To enable this growth, molecular imaging innovations from Siemens provide you with the additional diagnostic information needed to more confidently diagnose, stage and treat patients, particularly in the fields of oncology, cardiology and neurology.

As your partner, Siemens Molecular Imaging is committed to helping extend the availability of molecular imaging even further. How? By providing you with technology that helps you continuously advance your lead – through enhanced clinical utilization, greater patient access and new clinical applications.